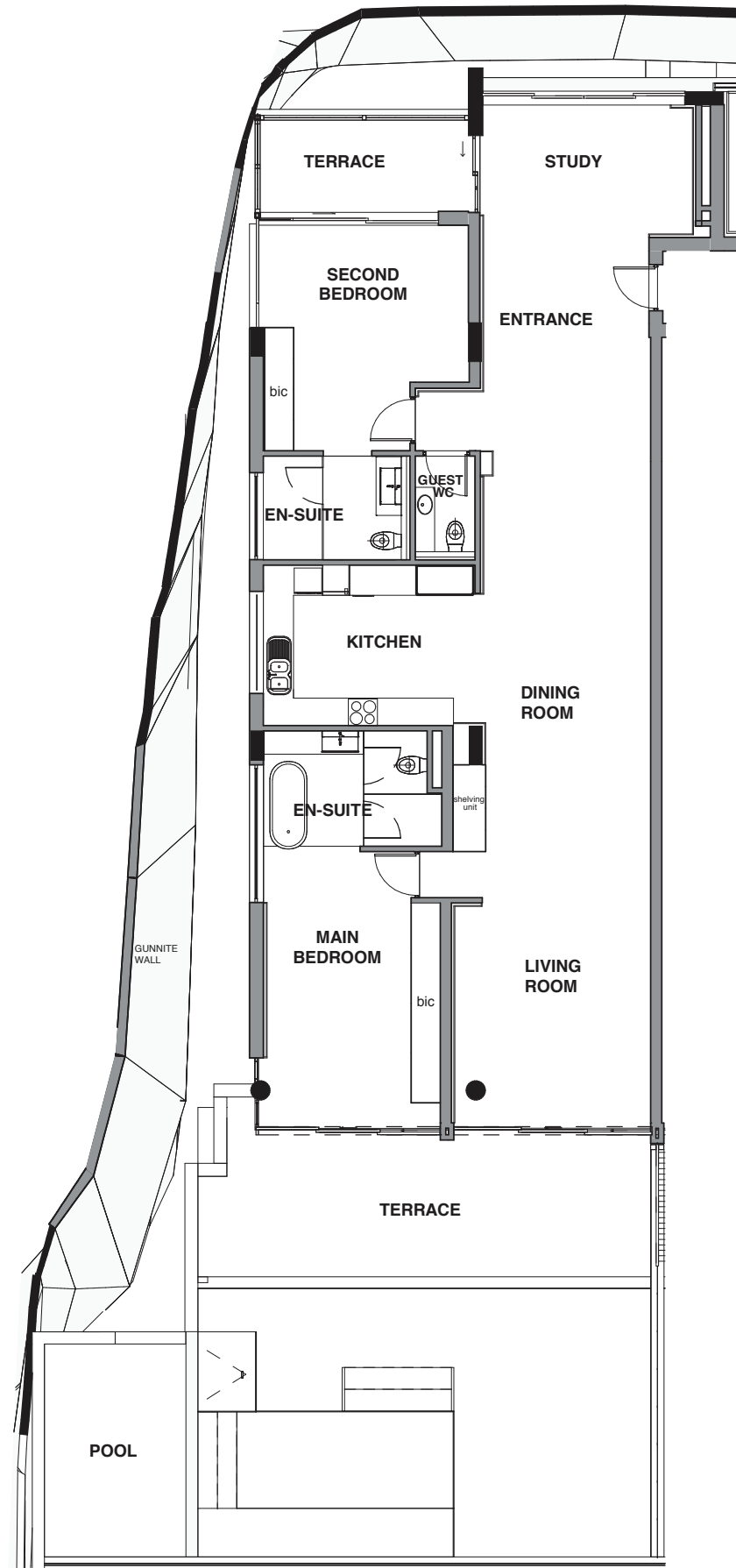


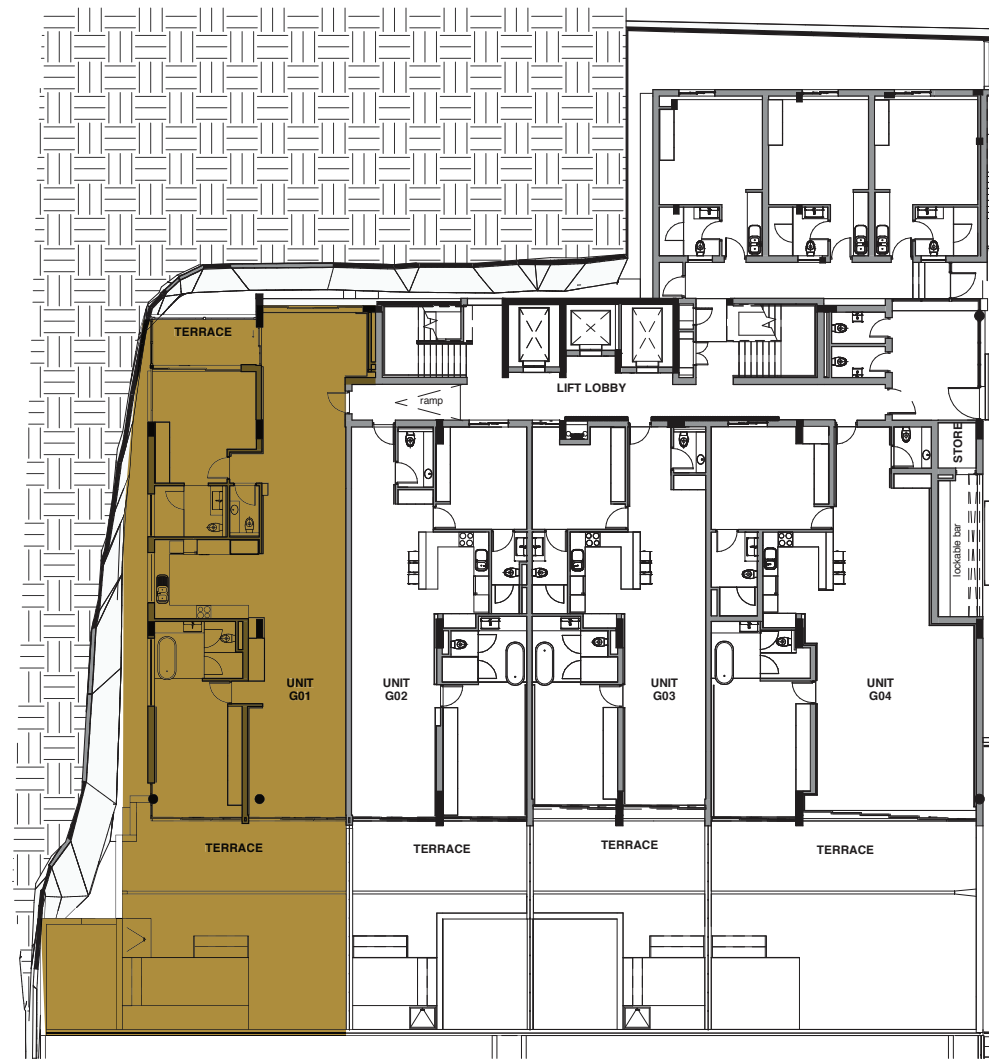


THE ESTATE
ON ST JOHNS

FLOORPLANS



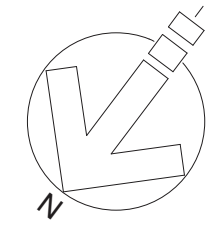
UNIT G.01 PLAN



GROUND STOREY
1 : 200



NORTH-WEST ELEVATION

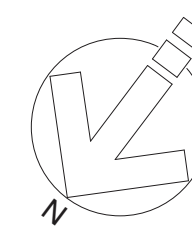


G-01 267m²

INTERNAL AREA:	168m ²
EXTERNAL AREAS:	99m ²
BEDROOMS:	2
BATHROOMS:	3
PARKING BAYS:	2
PRIVATE SWIMMING POOL:	YES
UNIT STYLE:	CLASSIC
ADDRESS:	55 St Johns Rd, Sea Point.
ERF NO:	1806



THE ESTATE
ON ST JOHNS



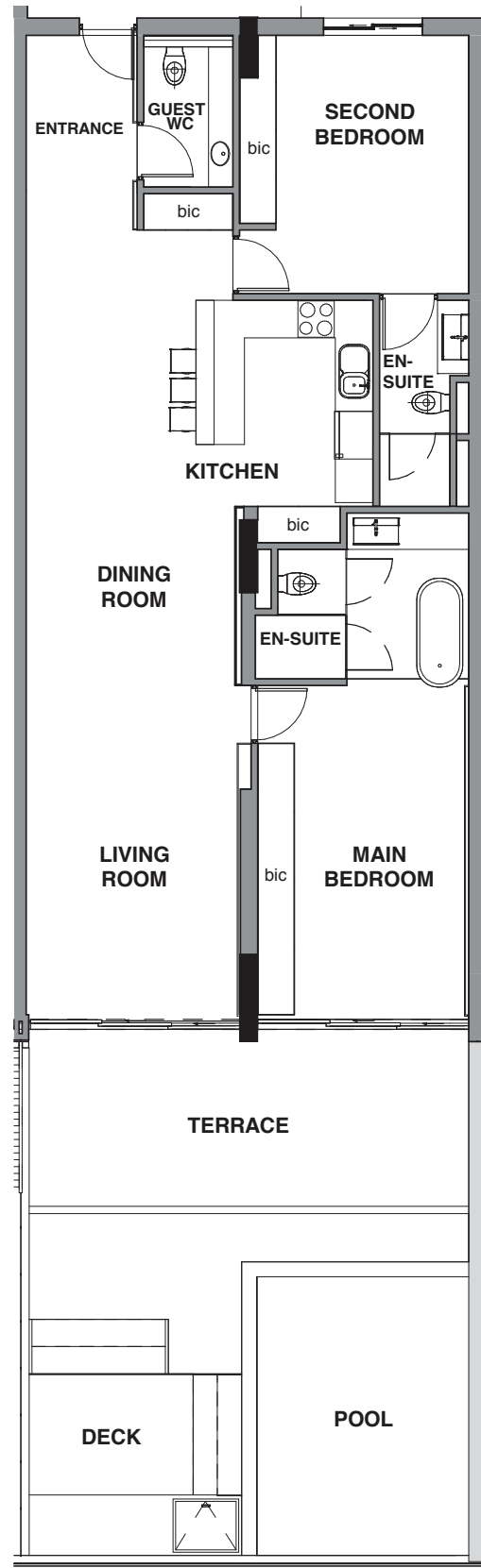
PARKING AND STOREROOM (BASEMENT-2)

- Sold
- Allocated Parking Bay
- Reserved Optional Purchase Extra

G-01 267m²

INTERNAL AREA:	168m ²
EXTERNAL AREAS:	99m ²
BEDROOMS:	2
BATHROOMS:	3
PARKING BAYS:	2
PRIVATE SWIMMING POOL:	YES
UNIT STYLE:	CLASSIC
ADDRESS:	55 St Johns Rd, Sea Point.
ERF NO:	1806





UNIT G.02 PLAN

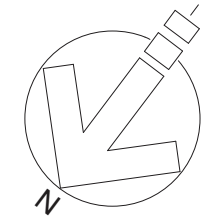


GROUND STOREY

1 : 200



NORTH-WEST ELEVATION



G-02

191m²

INTERNAL AREA: 124m²

EXTERNAL AREAS: 67m²

BEDROOMS: 2

BATHROOMS: 3

PARKING BAYS: 2

PRIVATE SWIMMING POOL: YES

UNIT STYLE: CLASSIC

ADDRESS: 55 St Johns Rd,

Sea Point.

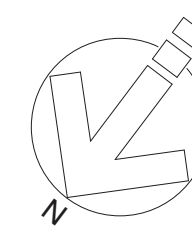
ERF NO: 1806

SOLD



THE ESTATE

ON ST JOHNS



PARKING AND STOREROOM (BASEMENT-2)

- Sold
- Allocated Parking Bay
- Reserved Optional Purchase Extra

G-02 191m²

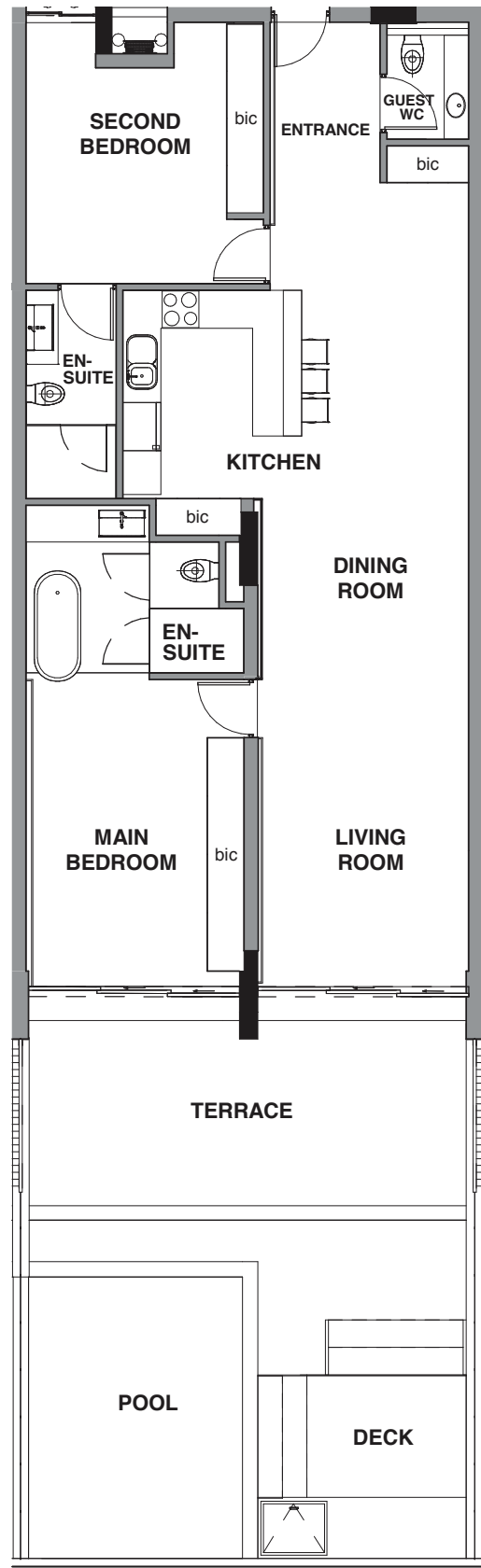
INTERNAL AREA:	124m ²
EXTERNAL AREAS:	67m ²
BEDROOMS:	2
BATHROOMS:	3
PARKING BAYS:	2
PRIVATE SWIMMING POOL:	YES
UNIT STYLE:	CLASSIC
ADDRESS:	55 St Johns Rd, Sea Point.
ERF NO:	1806

SOLD

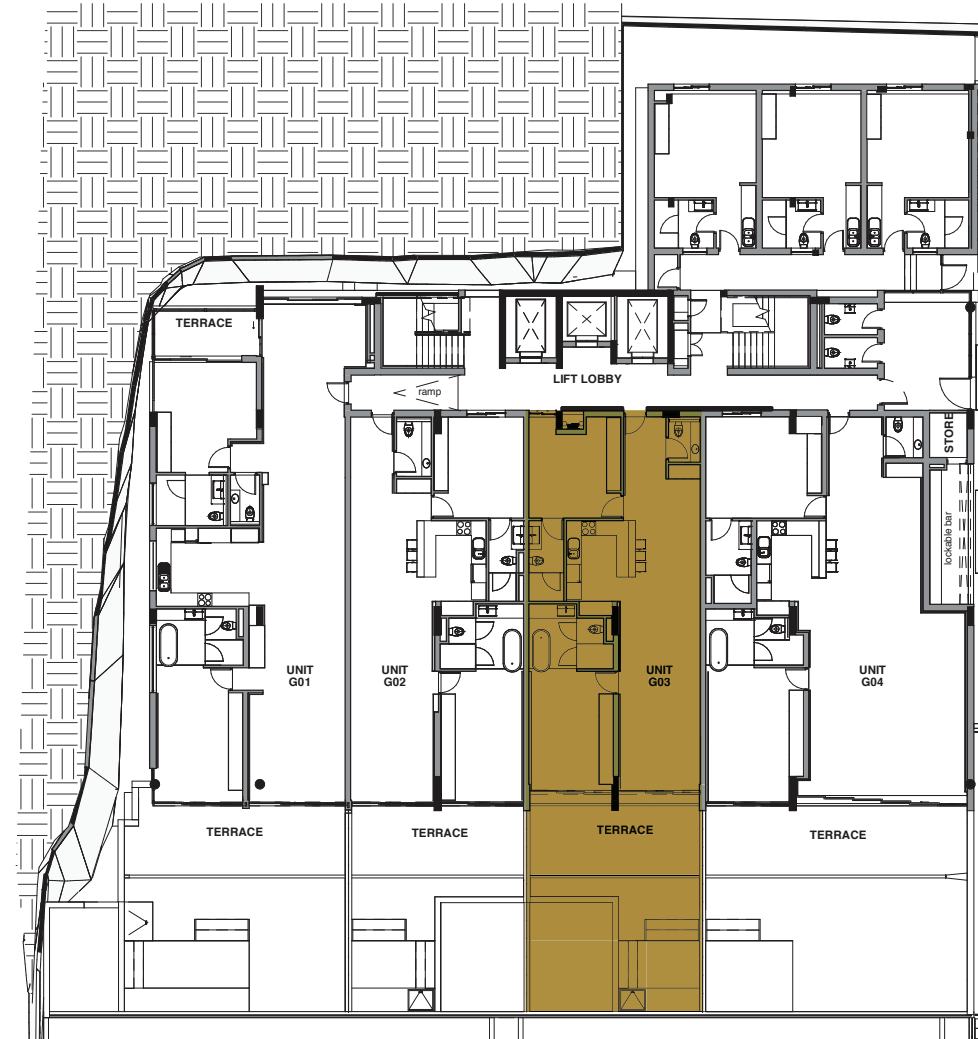


THE ESTATE

ON ST JOHNS



UNIT G.03 PLAN

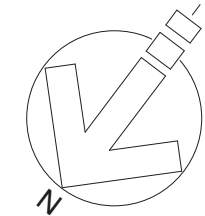


GROUND STOREY

1 : 200



NORTH-WEST ELEVATION

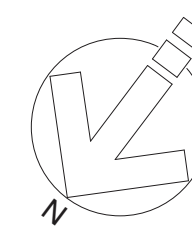


G-03 191m²

- INTERNAL AREA: 121m²
- EXTERNAL AREAS: 70m²
- BEDROOMS: 2
- BATHROOMS: 3
- PARKING BAYS: 2
- PRIVATE SWIMMING POOL: YES
- UNIT STYLE: CLASSIC
- ADDRESS: 55 St Johns Rd,
Sea Point.
- ERF NO: 1806



THE ESTATE
ON ST JOHNS

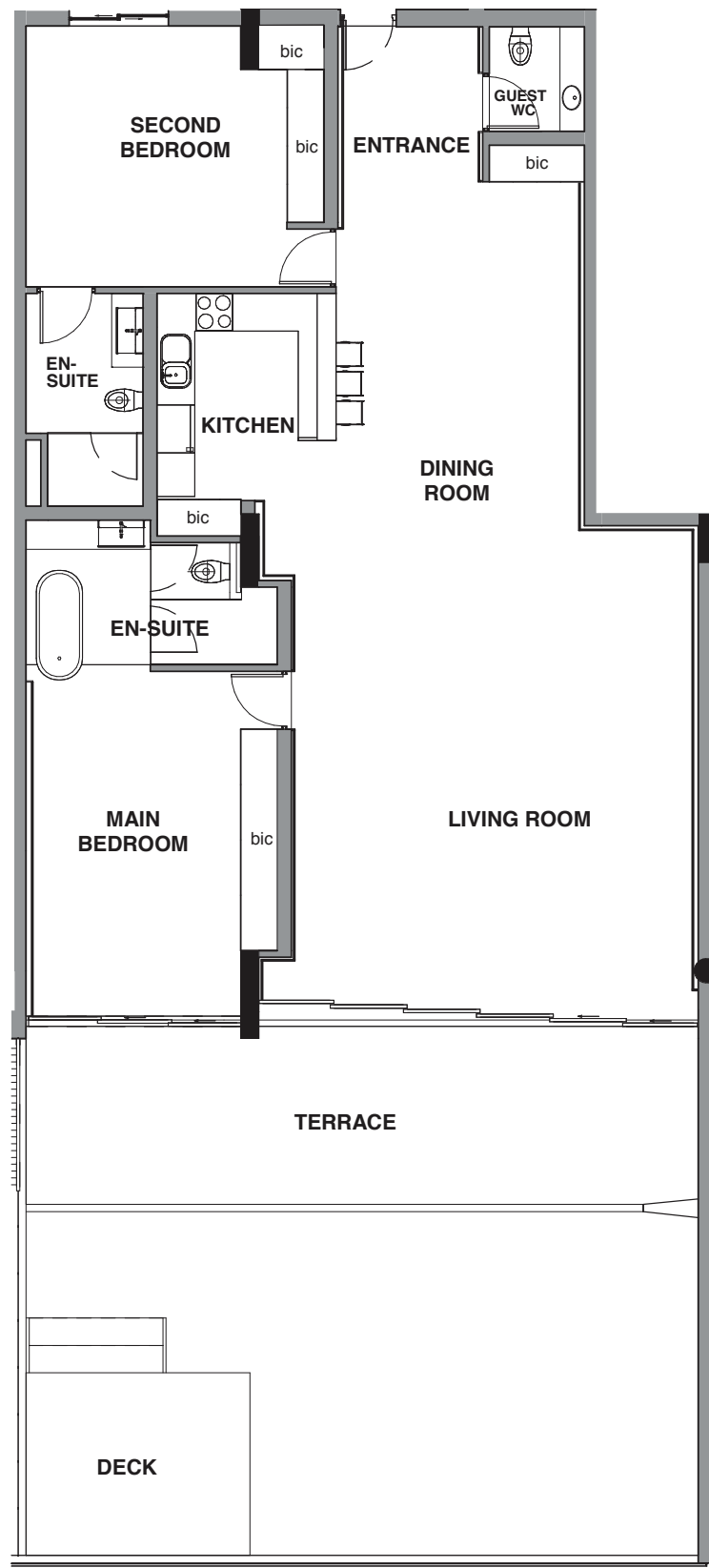


PARKING AND STOREROOM (BASEMENT-2)

- Sold
- Allocated Parking Bay
- Reserved Optional Purchase Extra

G-03	191m ²
INTERNAL AREA:	121m ²
EXTERNAL AREAS:	70m ²
BEDROOMS:	2
BATHROOMS:	3
PARKING BAYS:	2
PRIVATE SWIMMING POOL:	YES
UNIT STYLE:	CLASSIC
ADDRESS:	55 St Johns Rd, Sea Point.
ERF NO:	1806





UNIT G.04 PLAN

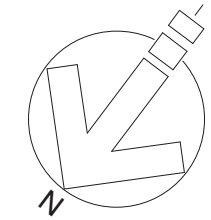


GROUND STOREY

1 : 200



NORTH-WEST ELEVATION



G-04

274m²

INTERNAL AREA: 172m²

EXTERNAL AREAS: 102m²

BEDROOMS: 2

BATHROOMS: 3

PARKING BAYS: 2

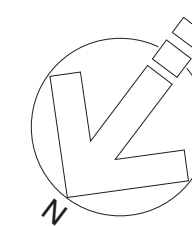
UNIT STYLE: CLASSIC

ADDRESS: 55 St Johns Rd,
Sea Point.

ERF NO: 1806



THE ESTATE
ON ST JOHNS



PARKING AND STOREROOM (BASEMENT-2)

- Sold
- Allocated Parking Bay
- Reserved Optional Purchase Extra

G-04 274m²

INTERNAL AREA: 172m²

EXTERNAL AREAS: 102m²

BEDROOMS: 2

BATHROOMS: 3

PARKING BAYS: 2

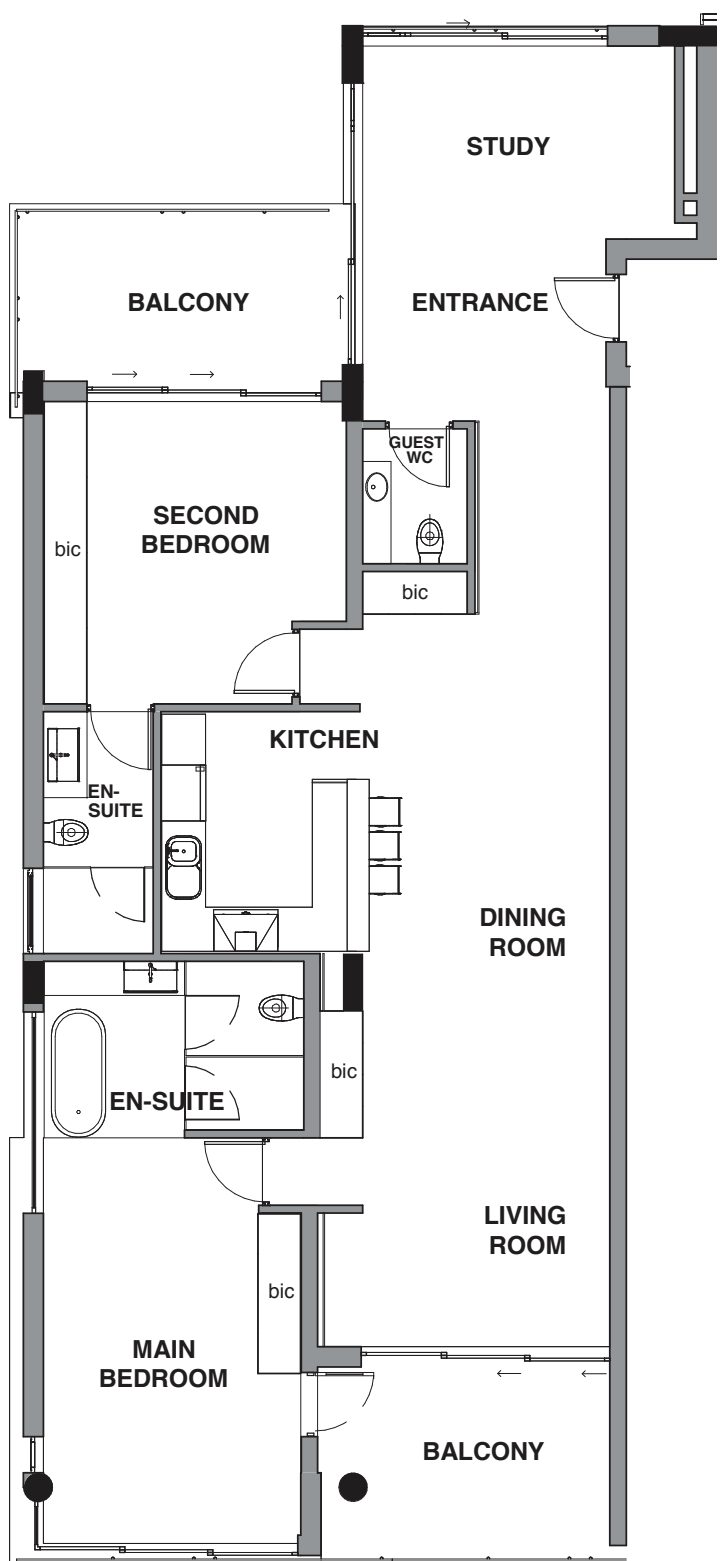
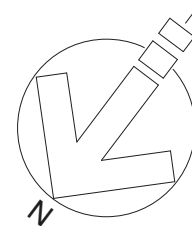
UNIT STYLE: CLASSIC

ADDRESS: 55 St Johns Rd,
Sea Point.

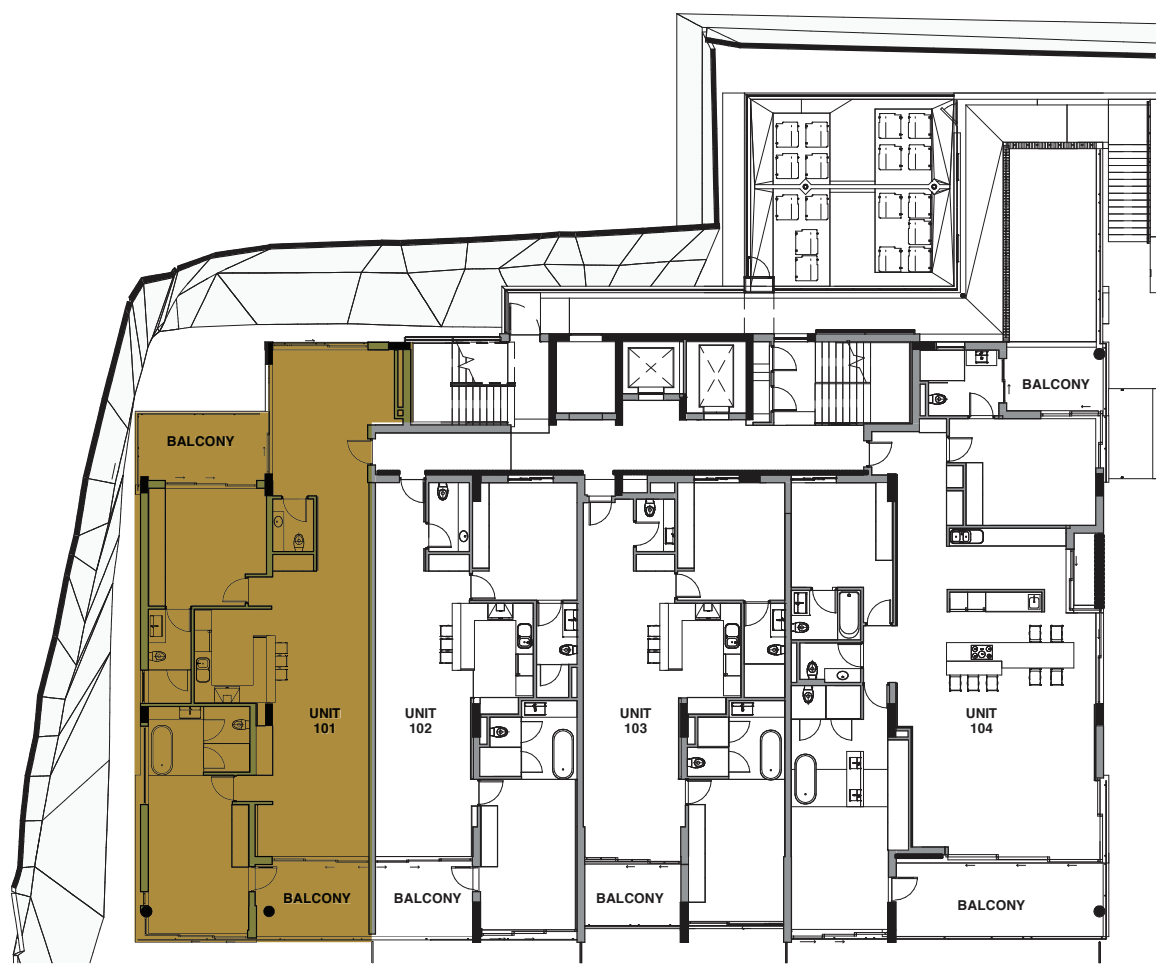
ERF NO: 1806



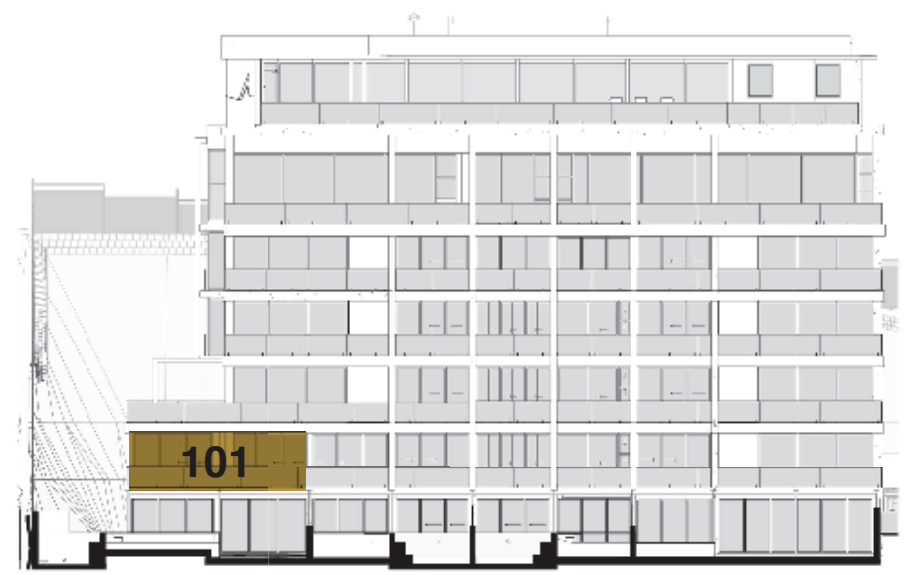
THE ESTATE
ON ST JOHNS



UNIT 101 PLAN



1st STOREY
1 : 200



NORTH-WEST ELEVATION

101

170m²

INTERNAL AREA: 145m²

EXTERNAL AREAS: 25m²

BEDROOMS: 2

BATHROOMS: 3

PARKING BAYS: 2

UNIT STYLE: CLASSIC

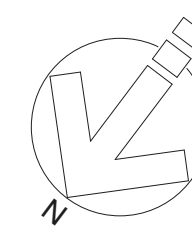
ADDRESS: 55 St Johns Rd,
Sea Point.

ERF NO: 1806

SOLD



THE ESTATE
ON ST JOHNS



PARKING AND STOREROOM (BASEMENT-2)

- Sold
- Allocated Parking Bay
- Reserved Optional Purchase Extra

101 170m²

INTERNAL AREA: 145m²

EXTERNAL AREAS: 25m²

BEDROOMS: 2

BATHROOMS: 3

PARKING BAYS: 2

UNIT STYLE: CLASSIC

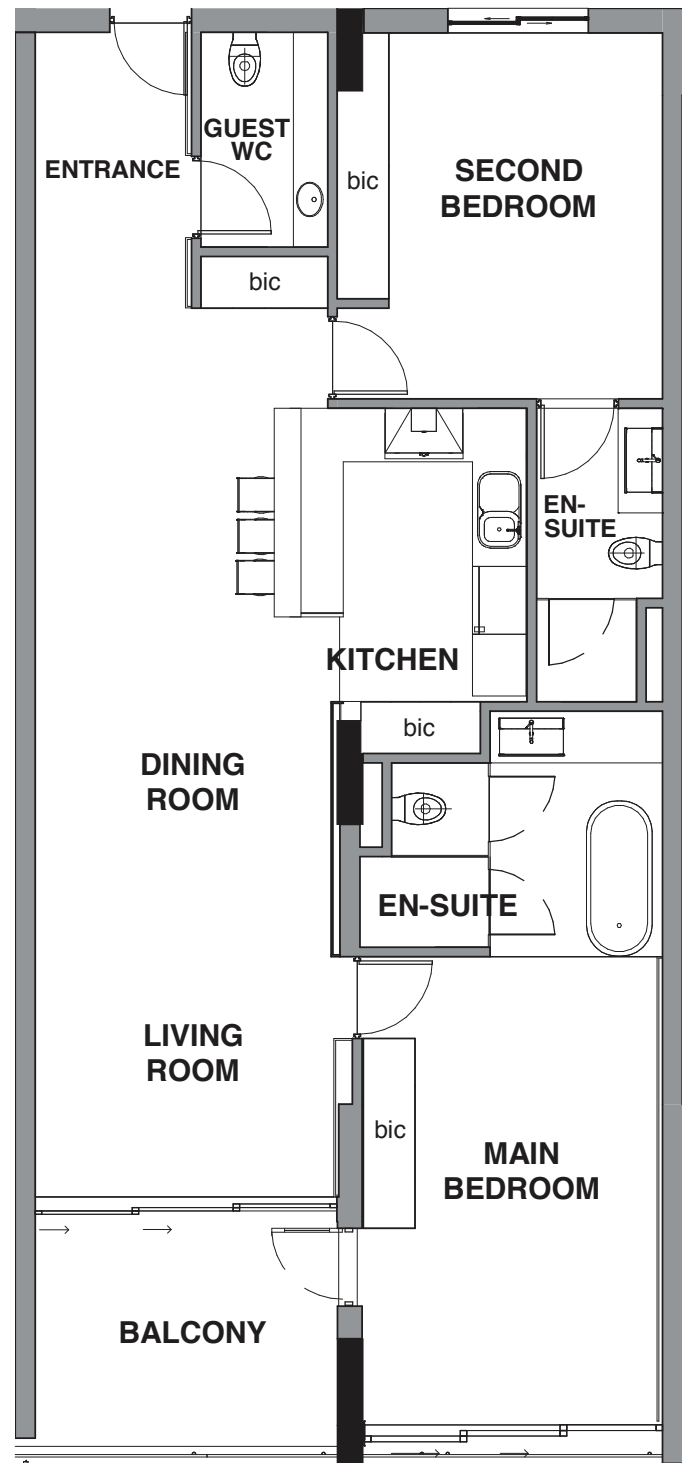
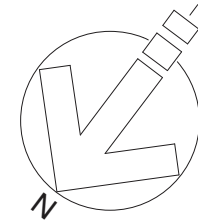
ADDRESS: 55 St Johns Rd,
Sea Point.

ERF NO: 1806

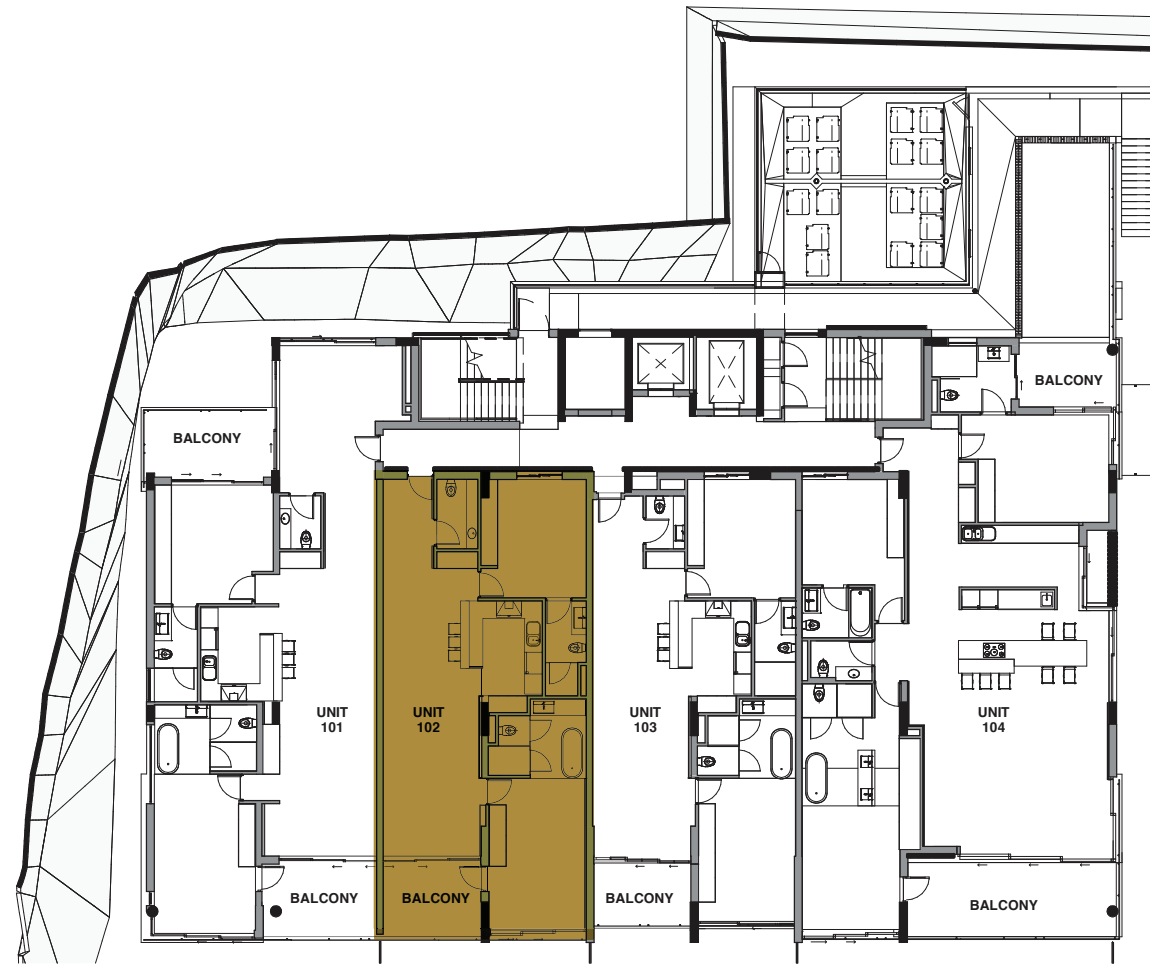
SOLD



THE ESTATE
ON ST JOHNS



UNIT 102 PLAN



1st STOREY
1 : 200



NORTH-WEST ELEVATION

102

125m²

INTERNAL AREA: 114m²

EXTERNAL AREAS: 11m²

BEDROOMS: 2

BATHROOMS: 3

PARKING BAYS: 2

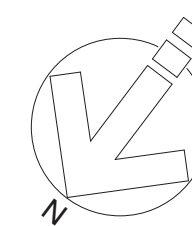
UNIT STYLE: CLASSIC

ADDRESS: 55 St Johns Rd,
Sea Point.

ERF NO: 1806



THE ESTATE
ON ST JOHNS



PARKING AND STOREROOM (BASEMENT-2)

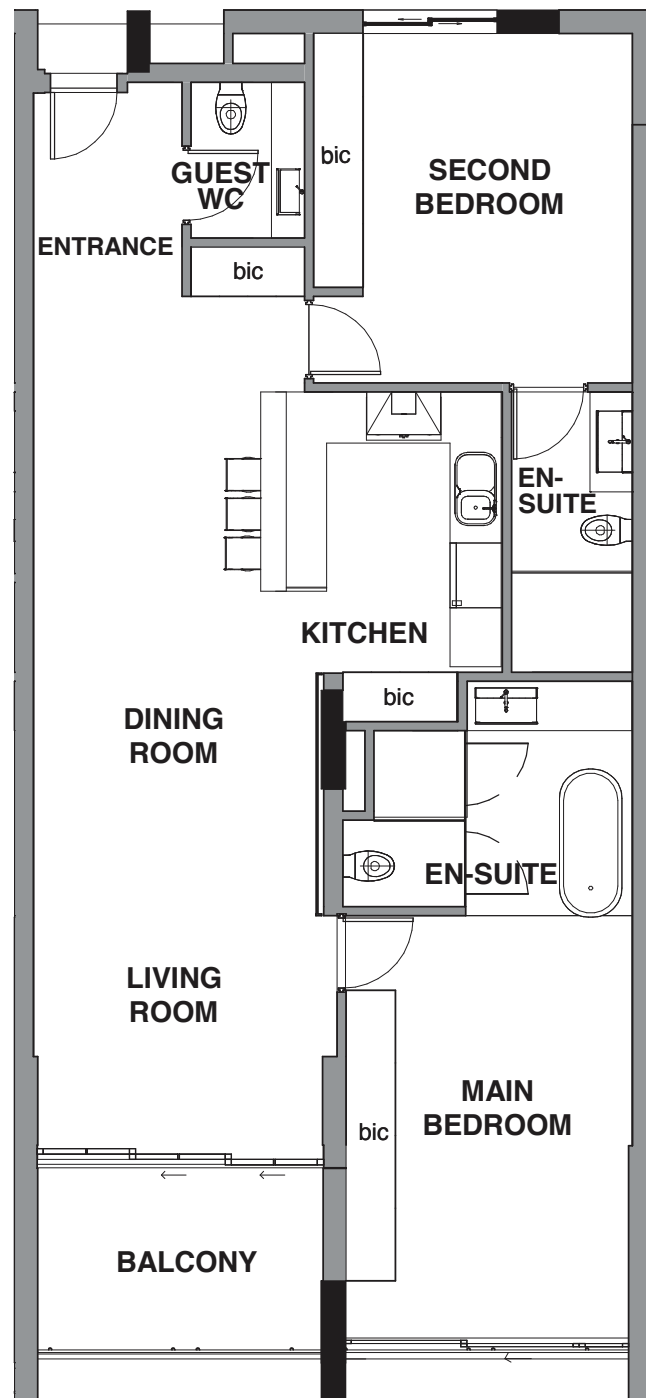
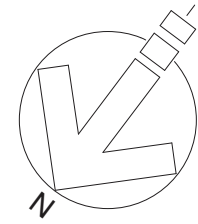
- Sold
- Allocated Parking Bay
- Reserved Optional Purchase Extra

102 125m²

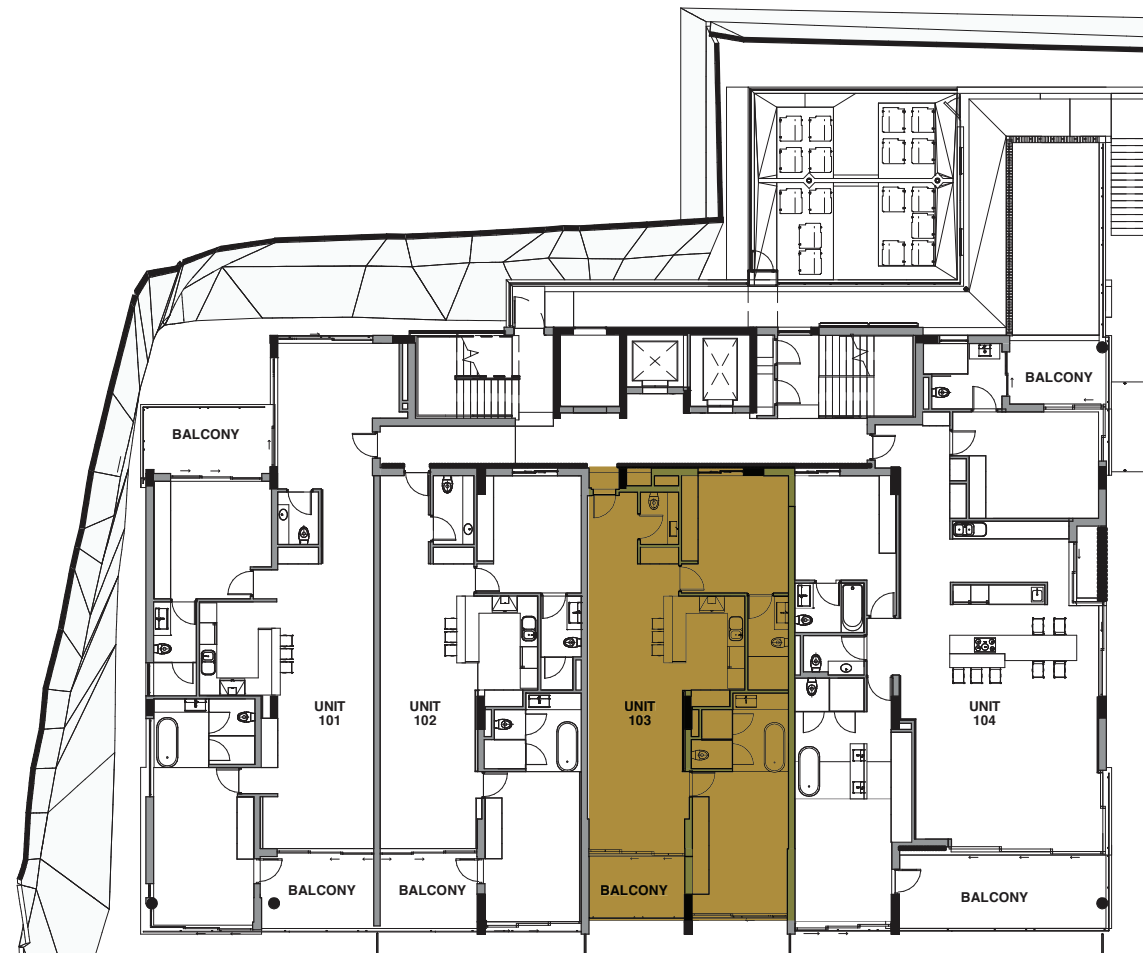
INTERNAL AREA: 114m²
 EXTERNAL AREAS: 11m²
 BEDROOMS: 2
 BATHROOMS: 3
 PARKING BAYS: 2

UNIT STYLE: CLASSIC
 ADDRESS: 55 St Johns Rd,
 Sea Point.
 ERF NO: 1806





UNIT 103 PLAN



1st STOREY
1 : 200



NORTH-WEST ELEVATION

103

119m²

INTERNAL AREA: 111m²

EXTERNAL AREAS: 8m²

BEDROOMS: 2

BATHROOMS: 3

PARKING BAYS: 2

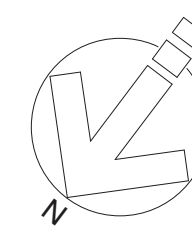
UNIT STYLE: MODERN

ADDRESS: 55 St Johns Rd,
Sea Point.

ERF NO: 1806



THE ESTATE
ON ST JOHNS

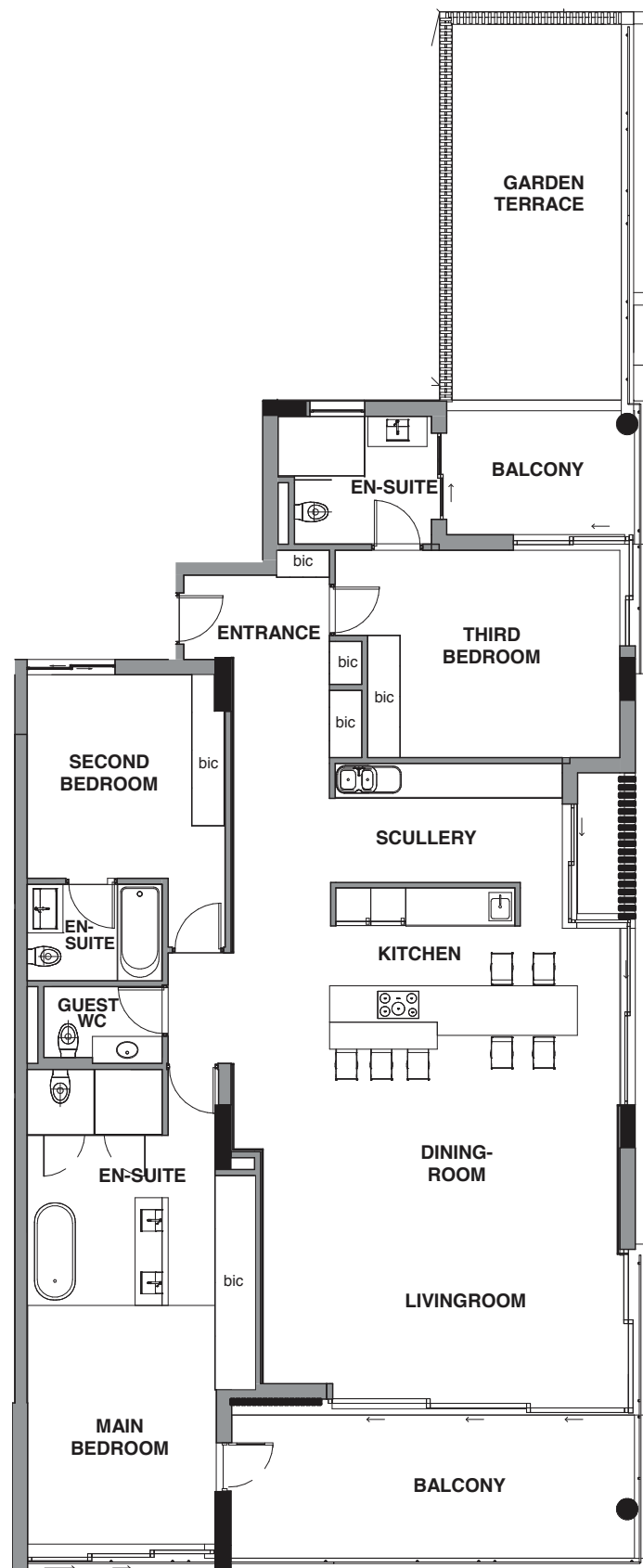
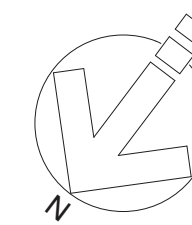


PARKING AND STOREROOM (BASEMENT-2)

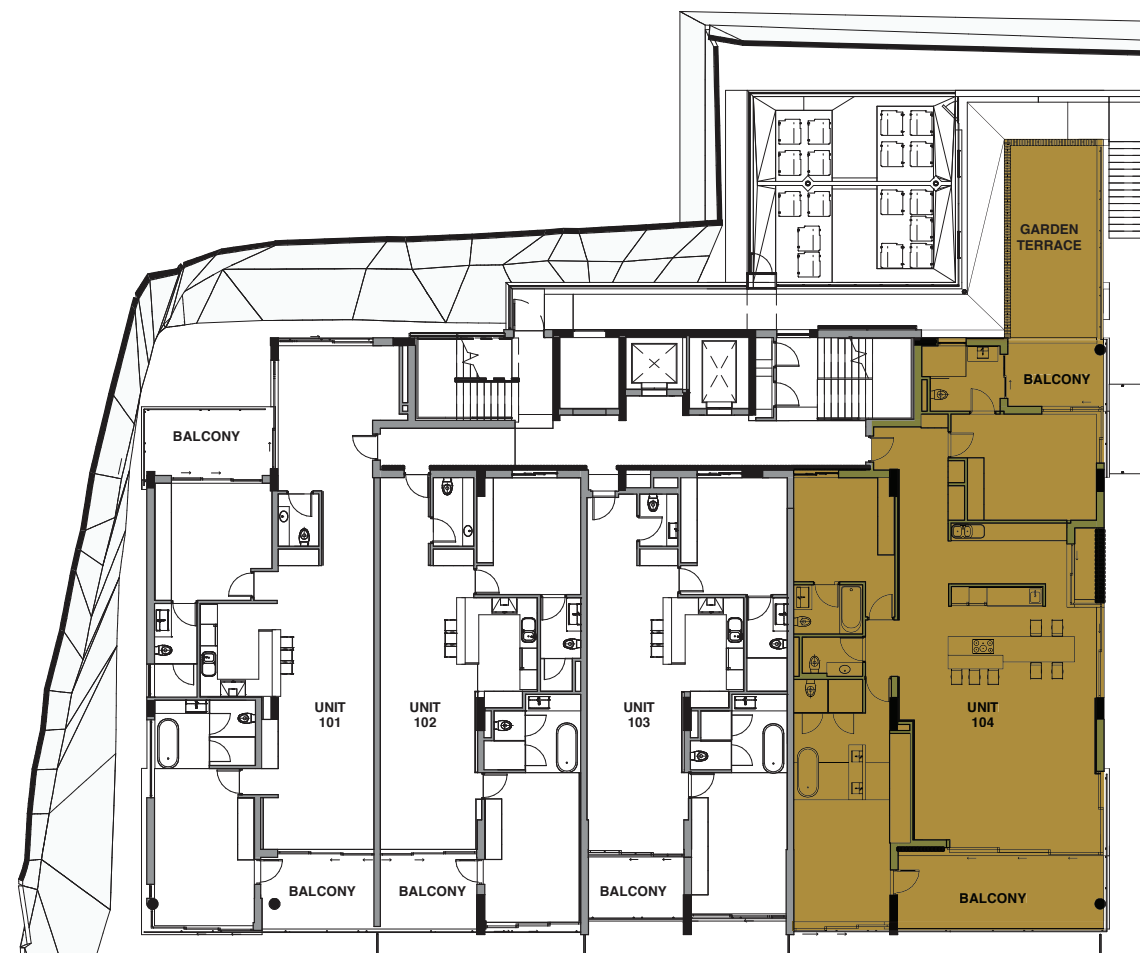
- Sold
- Allocated Parking Bay
- Reserved Optional Purchase Extra

103	119m ²
INTERNAL AREA:	111m ²
EXTERNAL AREAS:	8m ²
BEDROOMS:	2
BATHROOMS:	3
PARKING BAYS:	2
UNIT STYLE:	MODERN
ADDRESS:	55 St Johns Rd, Sea Point.
ERF NO:	1806





UNIT 104 PLAN



1st STOREY
1 : 200



NORTH-WEST ELEVATION

104 248m²

INTERNAL AREA: 190m²

EXTERNAL AREAS: 58m²

BEDROOMS: 3

BATHROOMS: 4

PARKING BAYS: 2

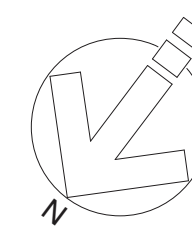
UNIT STYLE: MODERN

ADDRESS: 55 St Johns RD,
Sea Point.

ERF NO: 1806



THE ESTATE
ON ST JOHNS

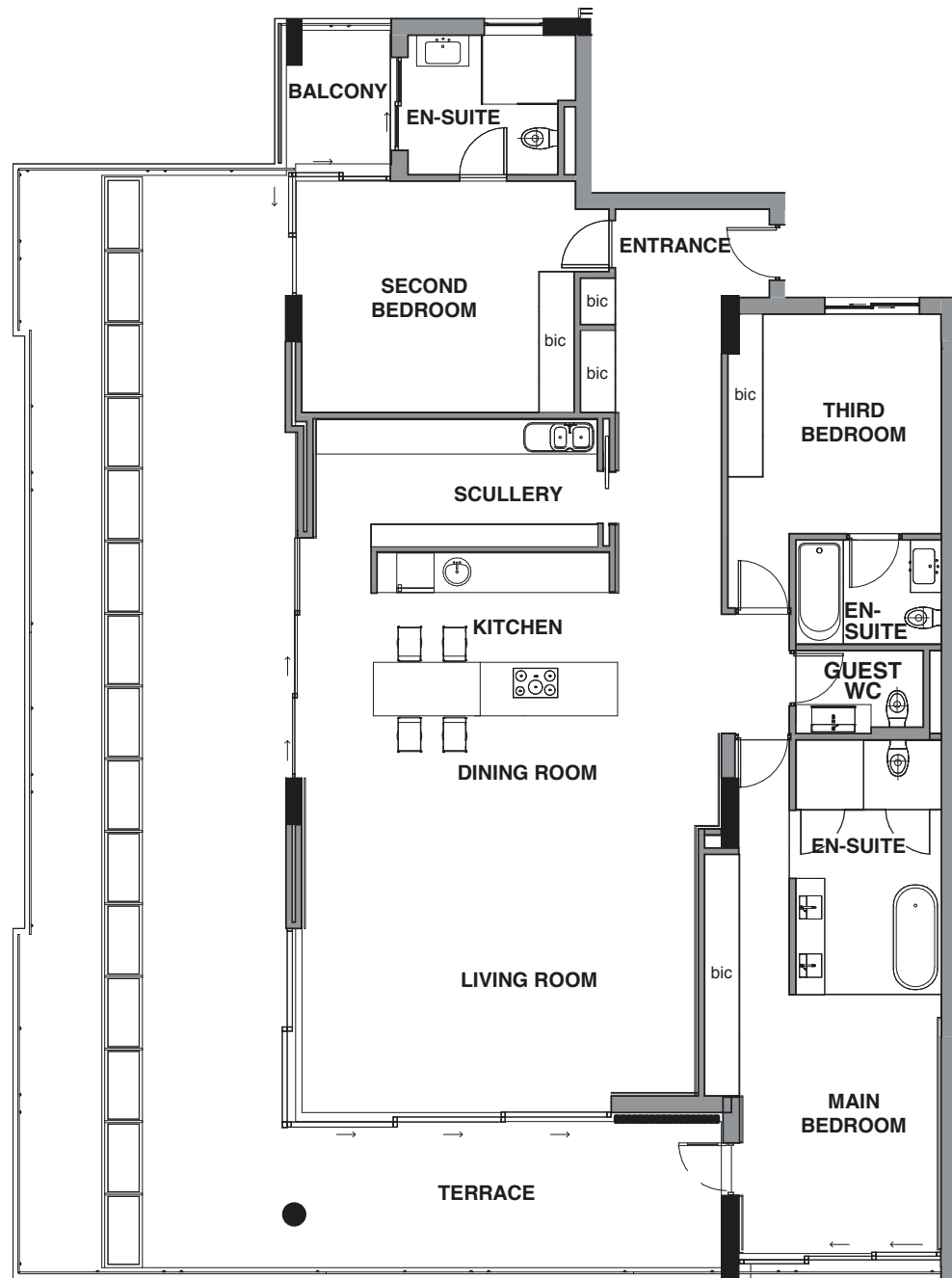
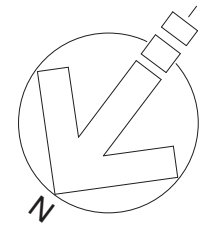


PARKING AND STOREROOM (BASEMENT-2)

- Sold
- Allocated Parking Bay
- Reserved Optional Purchase Extra

104	248m ²
INTERNAL AREA:	190m ²
EXTERNAL AREAS:	58m ²
BEDROOMS:	3
BATHROOMS:	4
PARKING BAYS:	2
UNIT STYLE:	MODERN
ADDRESS:	55 St Johns RD, Sea Point.
ERF NO:	1806





UNIT 201 PLAN



2nd STOREY
1 : 200



NORTH-WEST ELEVATION

201

267m²

INTERNAL AREA: 191m²

EXTERNAL AREAS: 76m²

BEDROOMS: 3

BATHROOMS: 4

PARKING BAYS: 2

UNIT STYLE: MODERN

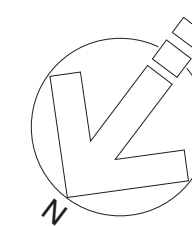
ADDRESS: 55 St Johns Rd,
Sea Point.

ERF NO: 1806

SOLD



THE ESTATE
ON ST JOHNS



PARKING AND STOREROOM (BASEMENT-2)

- Sold
- Allocated Parking Bay
- Reserved Optional Purchase Extra

201

267m²

INTERNAL AREA: 191m²

EXTERNAL AREAS: 76m²

BEDROOMS: 3

BATHROOMS: 4

PARKING BAYS: 2

UNIT STYLE: MODERN

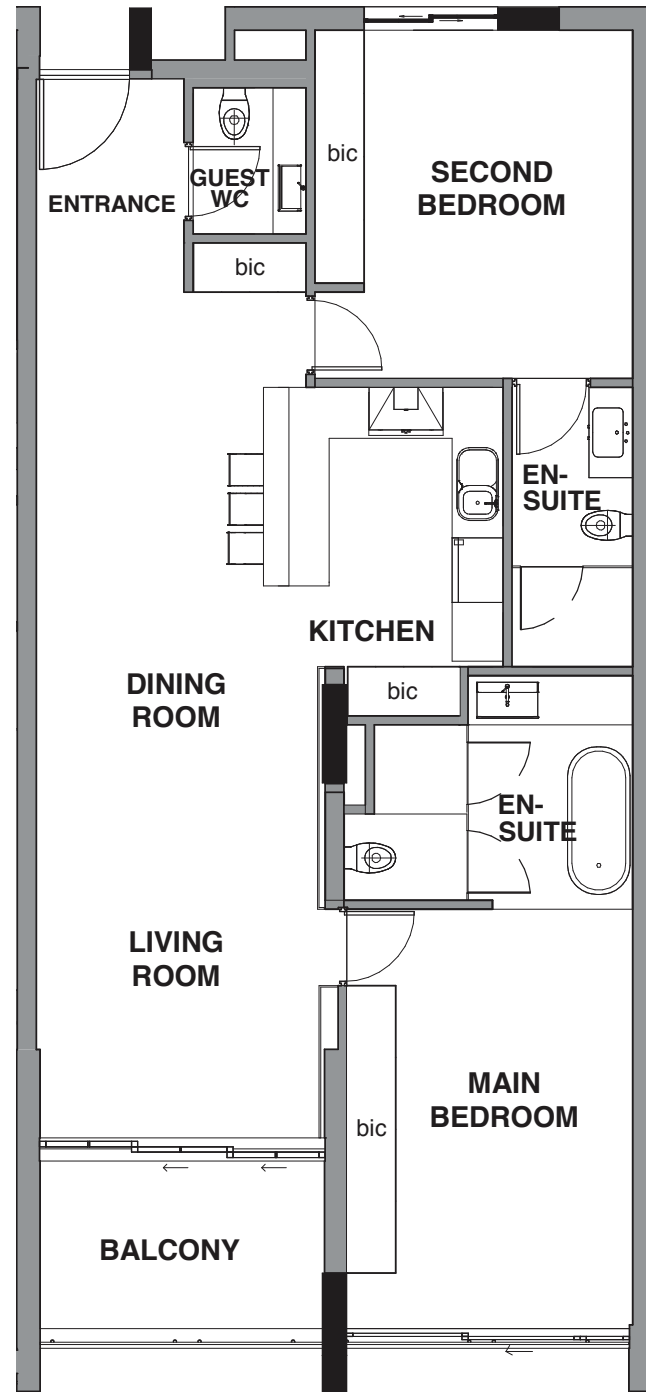
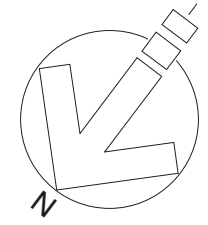
ADDRESS: 55 St Johns Rd,
Sea Point.

ERF NO: 1806

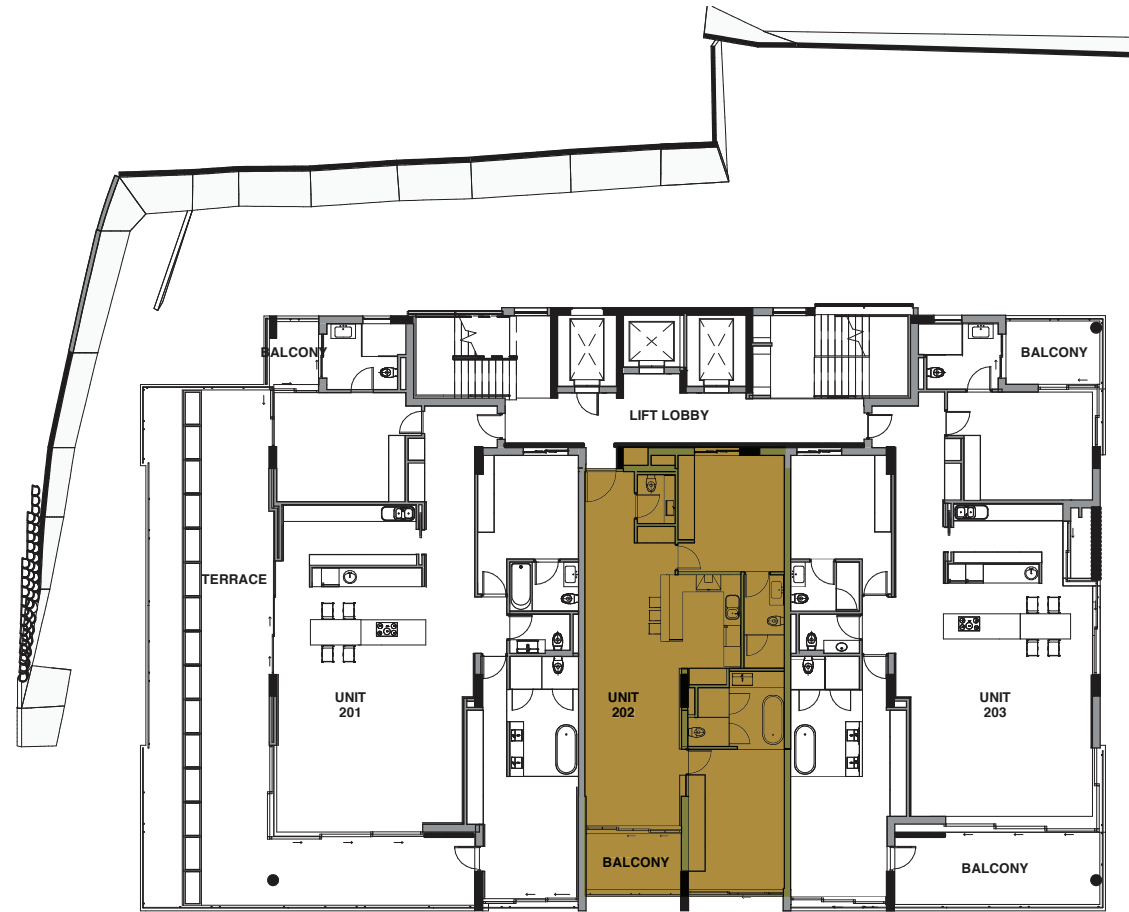
SOLD



THE ESTATE
ON ST JOHNS



UNIT 202 PLAN



2nd STOREY
1 : 200



NORTH-WEST ELEVATION

202

119m²

INTERNAL AREA: 111m²

EXTERNAL AREAS: 8m²

BEDROOMS: 2

BATHROOMS: 3

PARKING BAYS: 2

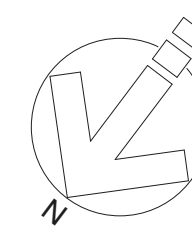
UNIT STYLE: MODERN

ADDRESS: 55 St Johns Rd,
Sea Point.

ERF NO: 1806



THE ESTATE
ON ST JOHNS

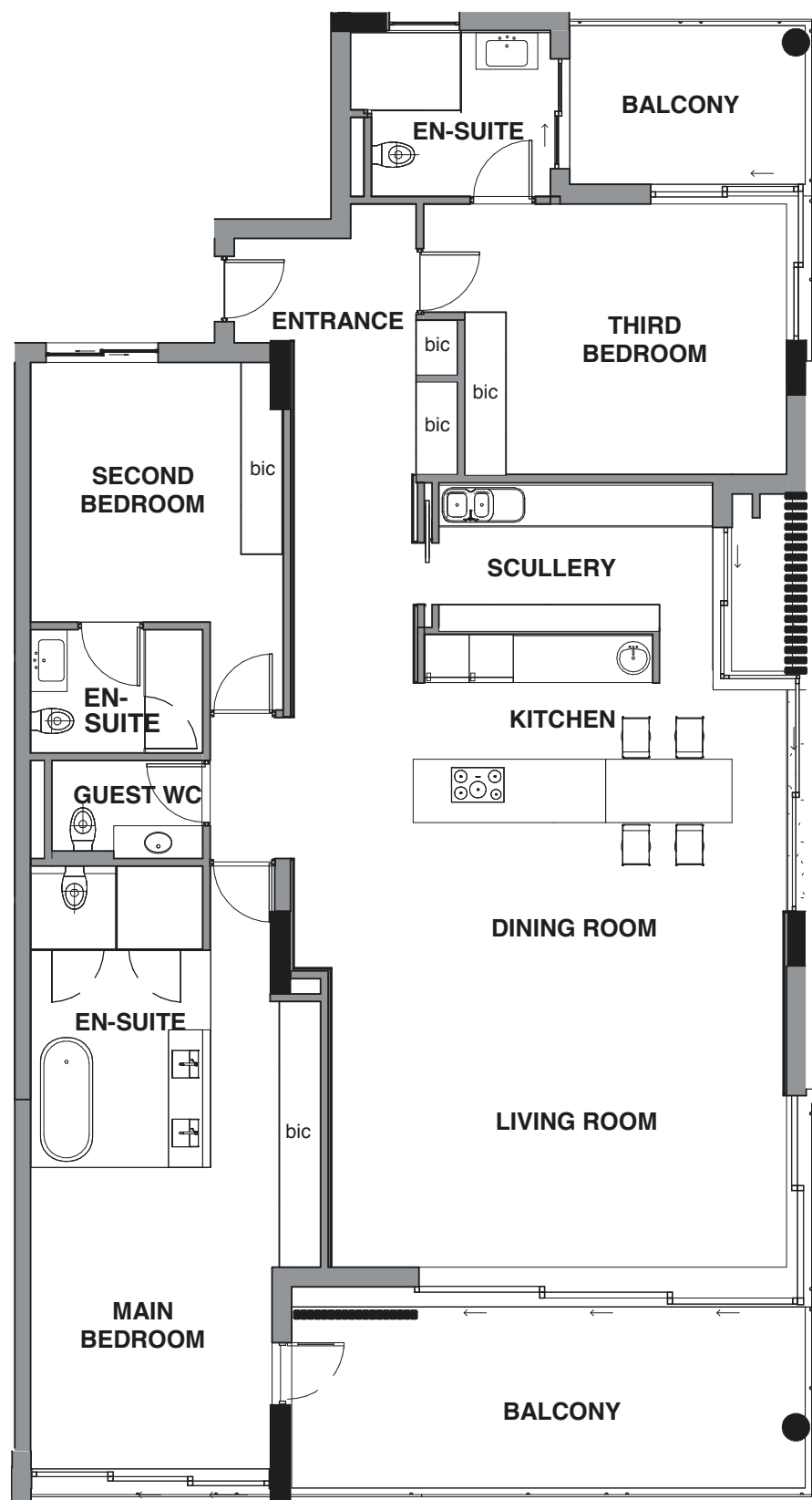
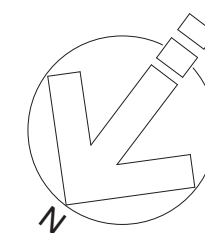


PARKING AND STOREROOM (BASEMENT-2)

- Sold
- Allocated Parking Bay
- Reserved Optional Purchase Extra

202	119m ²
INTERNAL AREA:	111m ²
EXTERNAL AREAS:	8m ²
BEDROOMS:	2
BATHROOMS:	3
PARKING BAYS:	2
UNIT STYLE:	MODERN
ADDRESS:	55 St Johns Rd, Sea Point.
ERF NO:	1806





UNIT 203 PLAN



2nd STOREY
1 : 200



NORTH-WEST ELEVATION

203

224m²

INTERNAL AREA: 190m²

EXTERNAL AREAS: 34m²

BEDROOMS: 3

BATHROOMS: 4

PARKING BAYS: 2

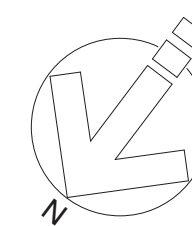
UNIT STYLE: CLASSIC

ADDRESS: 55 St Johns Rd,
Sea Point.

ERF NO: 1806



THE ESTATE
ON ST JOHNS



PARKING AND STOREROOM (BASEMENT-2)

- Sold
- Allocated Parking Bay
- Reserved Optional Purchase Extra

203

224m²

INTERNAL AREA: 190m²

EXTERNAL AREAS: 34m²

BEDROOMS: 3

BATHROOMS: 4

PARKING BAYS: 2

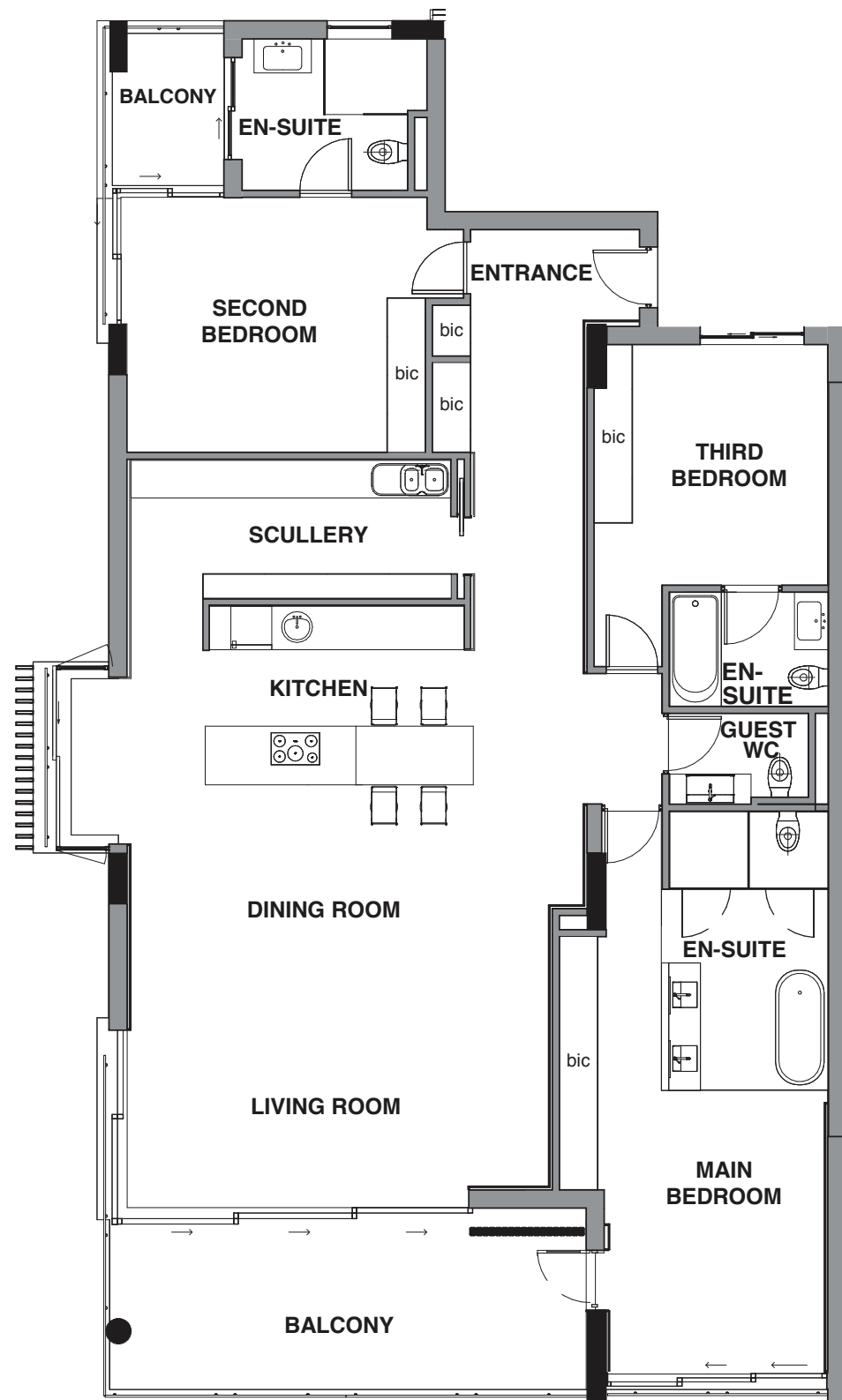
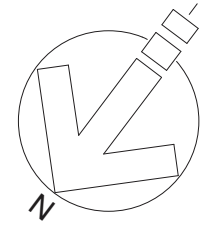
UNIT STYLE: CLASSIC

ADDRESS: 55 St Johns Rd,
Sea Point.

ERF NO: 1806



THE ESTATE
ON ST JOHNS



UNIT 301 PLAN



3rd STOREY
1 : 200



NORTH-WEST ELEVATION

301

220m²

INTERNAL AREA: 196m²

EXTERNAL AREAS: 26m²

BEDROOMS: 3

BATHROOMS: 4

PARKING BAYS: 2

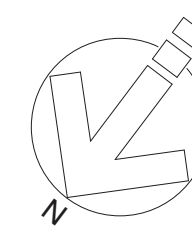
UNIT STYLE: CLASSIC

ADDRESS: 55 St Johns Rd,
Sea Point.

ERF NO: 1806



THE ESTATE
ON ST JOHNS



PARKING AND STOREROOM (BASEMENT-2)

- Sold
- Allocated Parking Bay
- Reserved Optional Purchase Extra

301 220m²

INTERNAL AREA: 196m²

EXTERNAL AREAS: 26m²

BEDROOMS: 3

BATHROOMS: 4

PARKING BAYS: 2

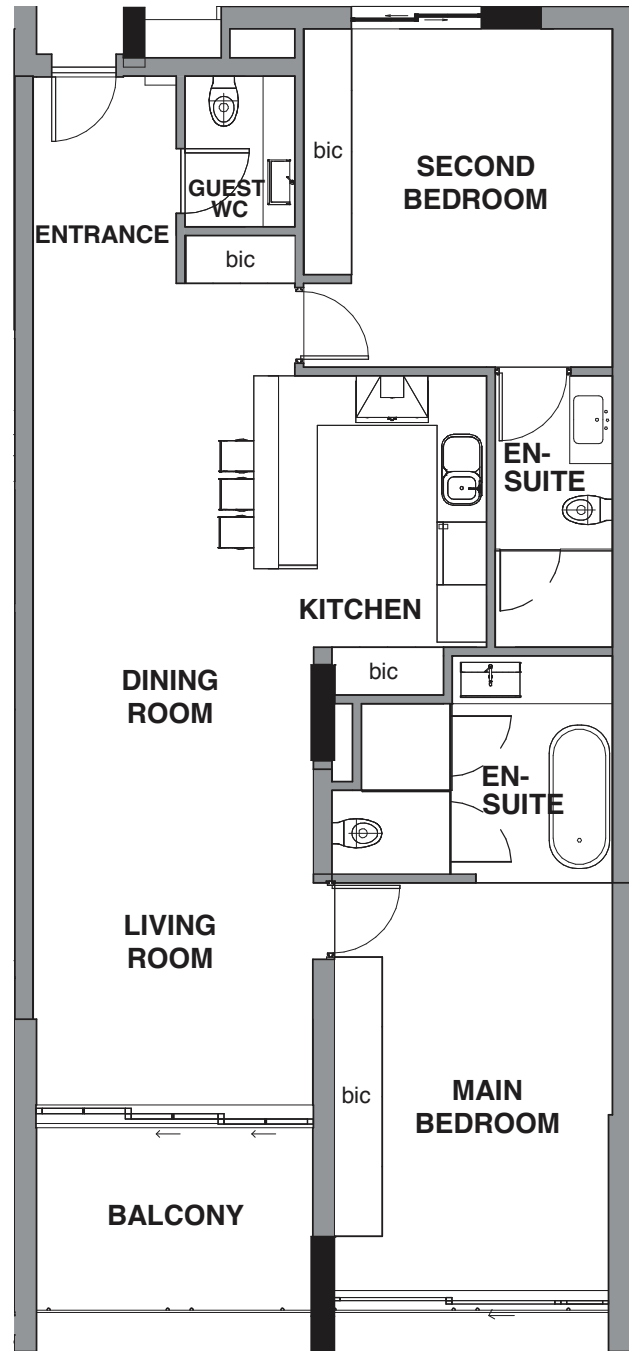
UNIT STYLE: CLASSIC

ADDRESS: 55 St Johns Rd,
Sea Point.

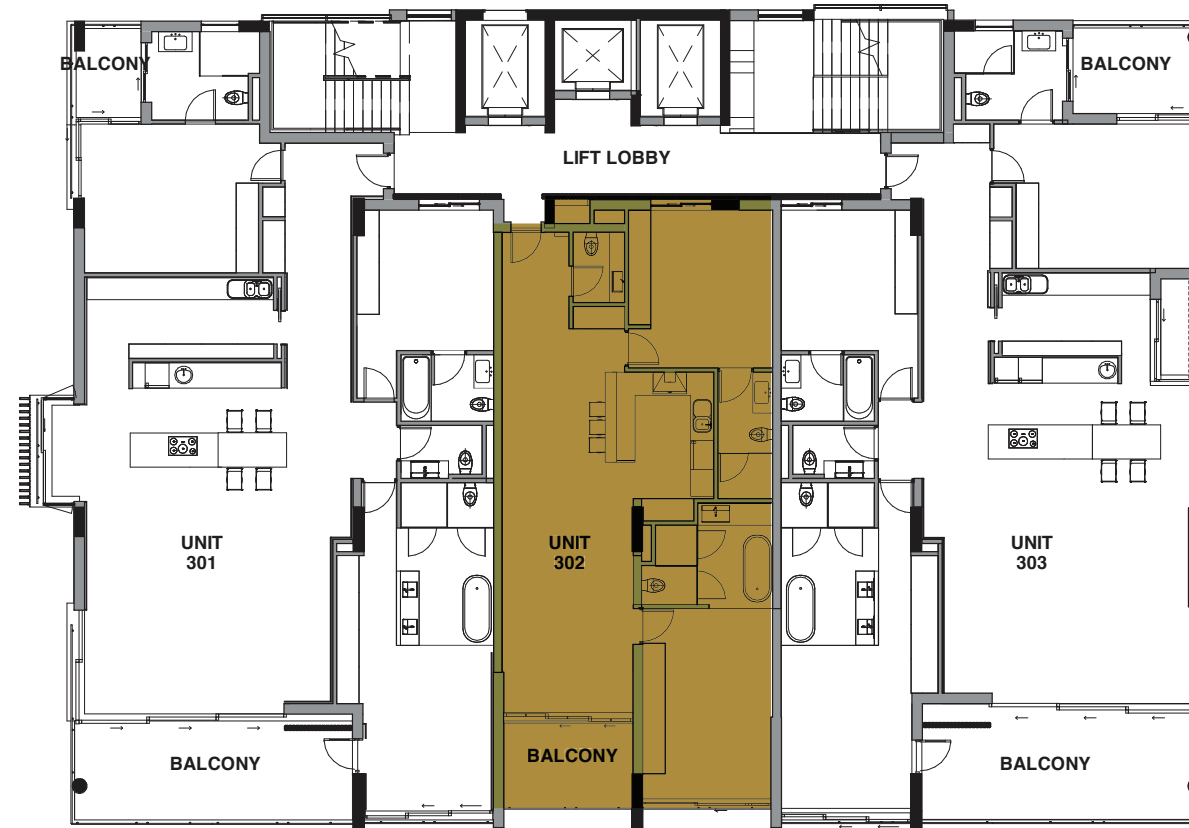
ERF NO: 1806



THE ESTATE
ON ST JOHNS



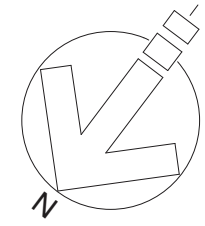
UNIT 302 PLAN



3rd STOREY
1 : 200



NORTH-WEST ELEVATION



302

119m²

INTERNAL AREA: 111m²

EXTERNAL AREAS: 8m²

BEDROOMS: 2

BATHROOMS: 3

PARKING BAYS: 2

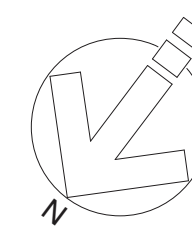
UNIT STYLE: MODERN

ADDRESS: 55 St Johns Rd,
Sea Point.

ERF NO: 1806



THE ESTATE
ON ST JOHNS



PARKING AND STOREROOM (BASEMENT-2)

- Sold
- Allocated Parking Bay
- Reserved Optional Purchase Extra

302

119m²

INTERNAL AREA: 111m²

EXTERNAL AREAS: 8m²

BEDROOMS: 2

BATHROOMS: 3

PARKING BAYS: 2

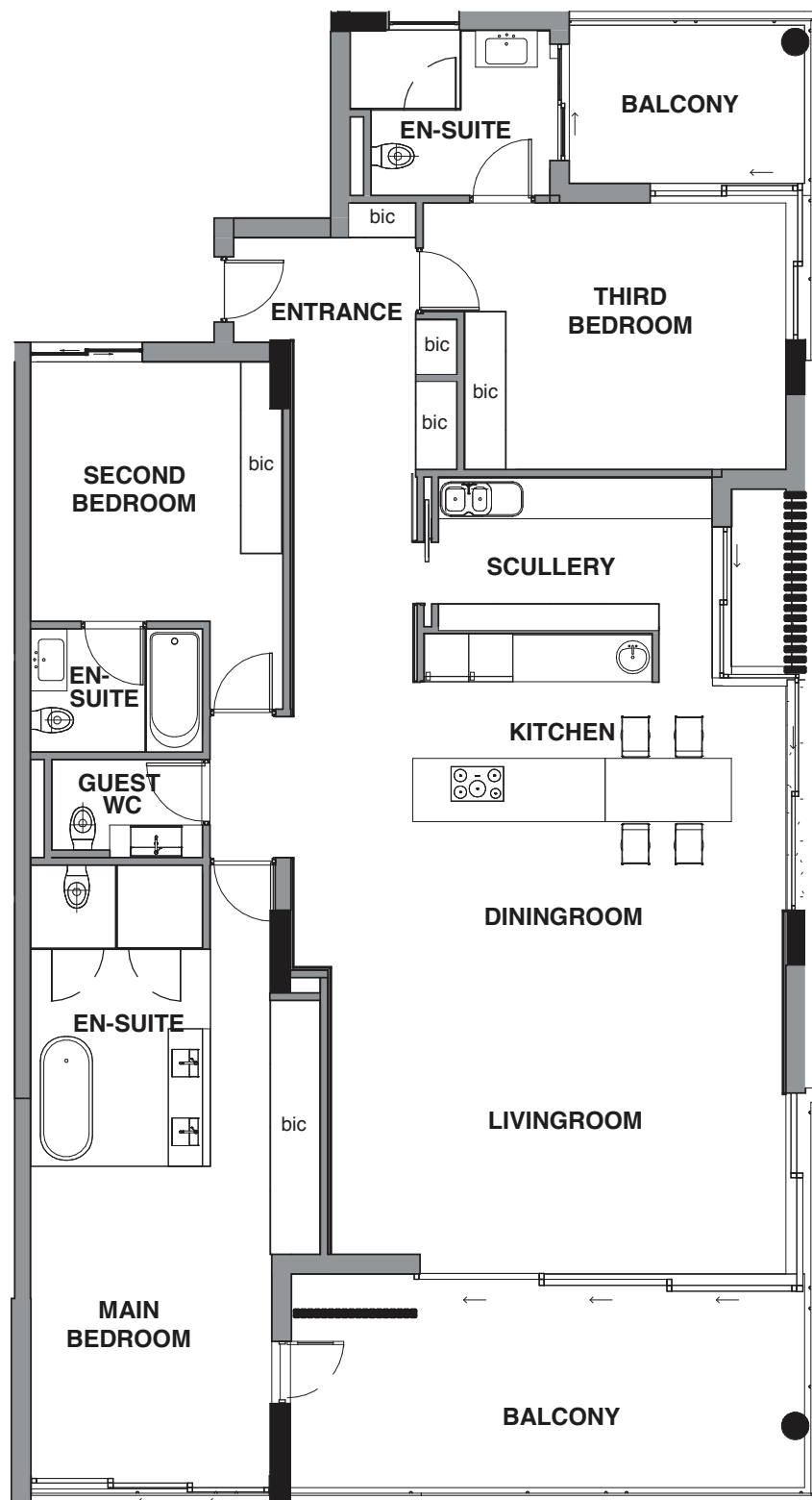
UNIT STYLE: MODERN

ADDRESS: 55 St Johns Rd,
Sea Point.

ERF NO: 1806



THE ESTATE
ON ST JOHNS



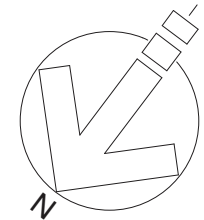
UNIT 303 PLAN



3rd STOREY
1 : 200



NORTH-WEST ELEVATION



303

224m²

INTERNAL AREA: 190m²

EXTERNAL AREAS: 34m²

BEDROOMS: 3

BATHROOMS: 4

PARKING BAYS: 2

UNIT STYLE: CLASSIC

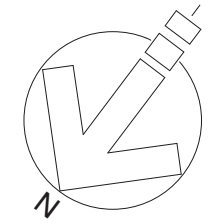
ADDRESS: 55 St Johns Rd,
Sea Point.

ERF NO: 1806

SOLD



THE ESTATE
ON ST JOHNS



PARKING AND STOREROOM (BASEMENT-1)

- Sold
- Allocated Parking Bay
- Reserved Optional Purchase Extra

303 224m²

INTERNAL AREA: 190m²

EXTERNAL AREAS: 34m²

BEDROOMS: 3

BATHROOMS: 4

PARKING BAYS: 2

UNIT STYLE: CLASSIC

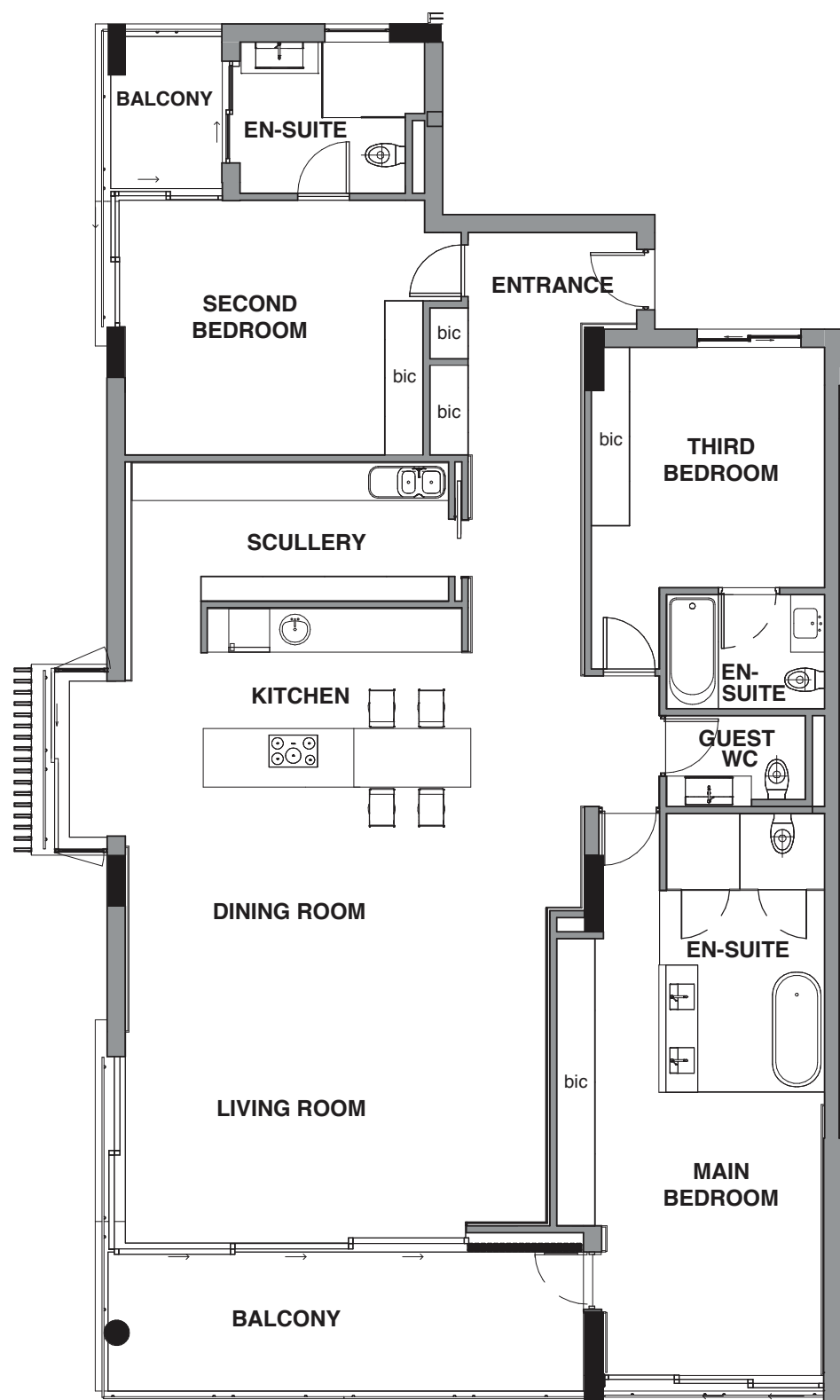
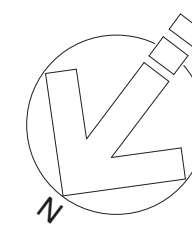
ADDRESS: 55 St Johns Rd,
Sea Point.

ERF NO: 1806

SOLD



THE ESTATE
ON ST JOHNS



UNIT 401 PLAN



4th STOREY

1 : 200



NORTH-WEST ELEVATION

401

220m²

INTERNAL AREA: 196m²

EXTERNAL AREAS: 26m²

BEDROOMS: 3

BATHROOMS: 4

PARKING BAYS: 2

UNIT STYLE: CLASSIC

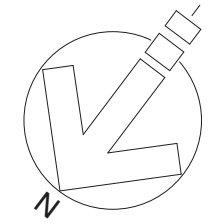
ADDRESS: 55 St Johns Rd,
Sea Point.

ERF NO: 1806

SOLD



THE ESTATE
ON ST JOHNS



PARKING AND STOREROOM (BASEMENT-1)

- Sold
- Allocated Parking Bay
- Reserved Optional Purchase Extra

401 220m²

INTERNAL AREA: 194m²

EXTERNAL AREAS: 26m²

BEDROOMS: 3

BATHROOMS: 4

PARKING BAYS: 2

UNIT STYLE: CLASSIC

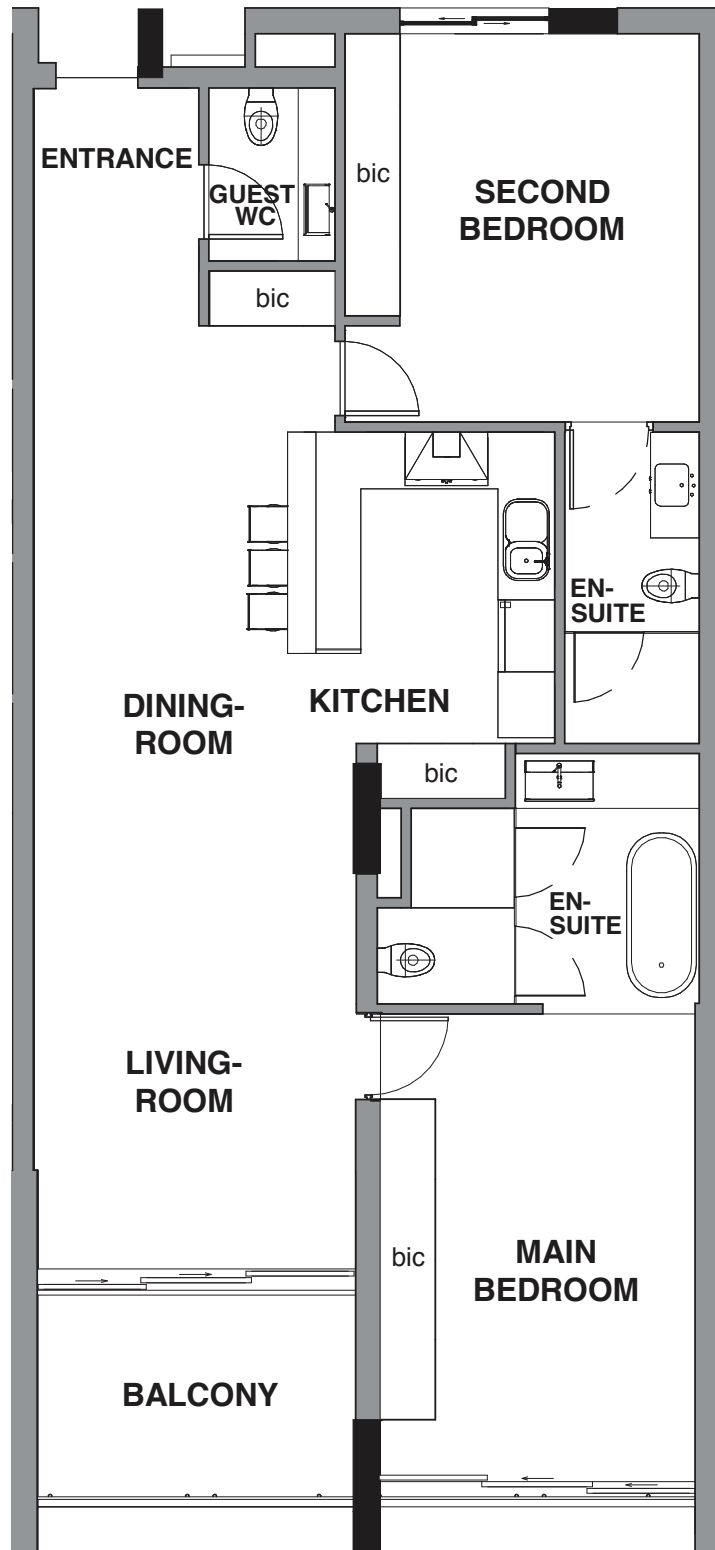
ADDRESS: 55 St Johns Rd,
Sea Point.

ERF NO: 1806

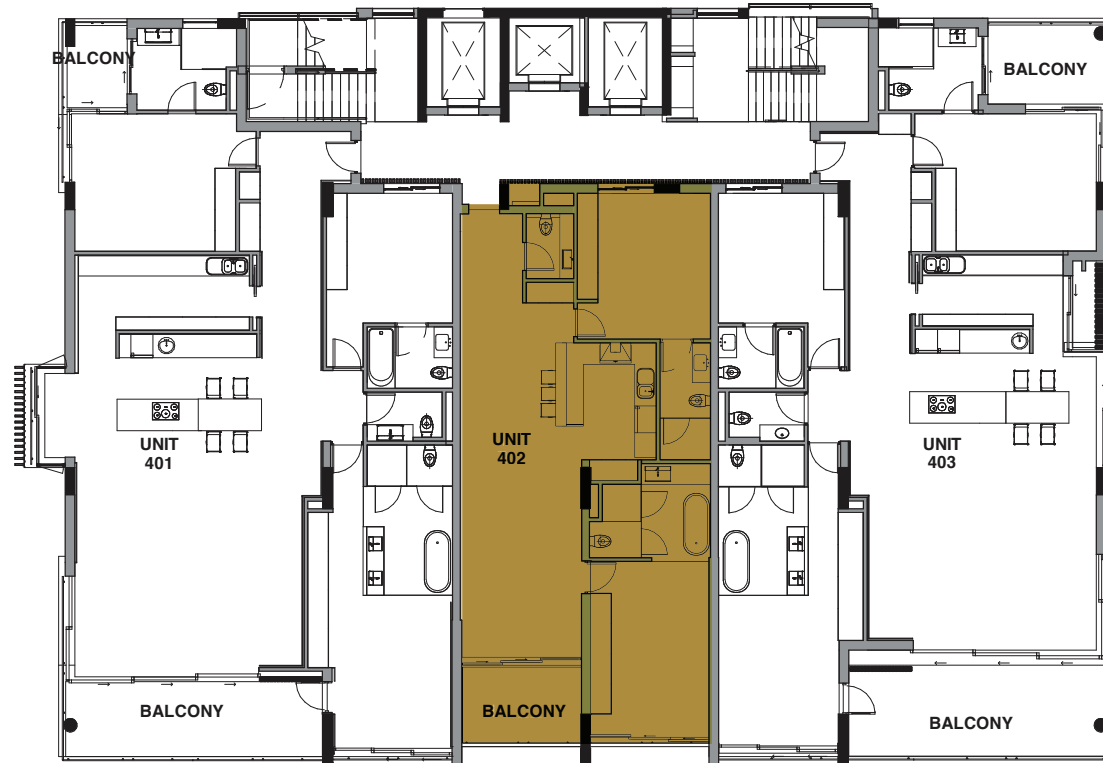
SOLD



THE ESTATE
ON ST JOHNS



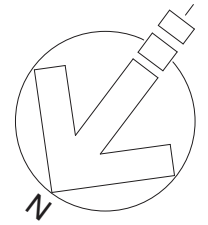
UNIT 402 PLAN



4th STOREY
1 : 200



NORTH-WEST ELEVATION



402

119m²

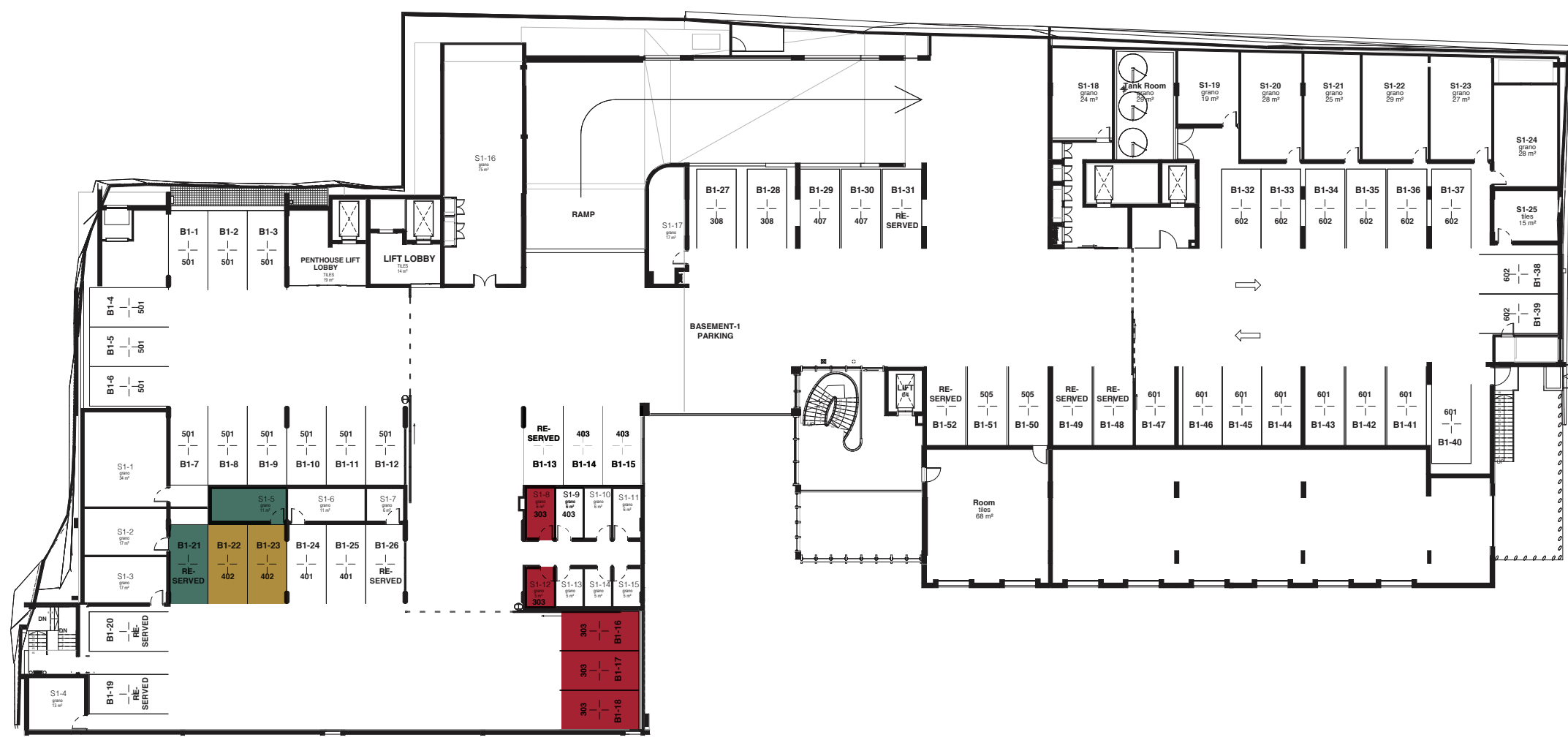
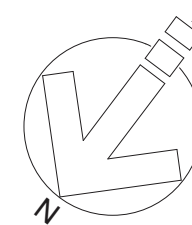
INTERNAL AREA:	111m ²
EXTERNAL AREAS:	8m ²
BEDROOMS:	2
BATHROOMS:	3
PARKING BAYS:	2

UNIT STYLE:	MODERN
ADDRESS:	55 St Johns Rd, Sea Point.
ERF NO:	1806

SOLD



THE ESTATE
ON ST JOHNS



PARKING AND STOREROOM (BASEMENT-1)

- Sold
- Allocated Parking Bay
- Reserved Optional Purchase Extra

402 119m²

INTERNAL AREA: 111m²

EXTERNAL AREAS: 8m²

BEDROOMS: 2

BATHROOMS: 3

PARKING BAYS: 2

UNIT STYLE: MODERN

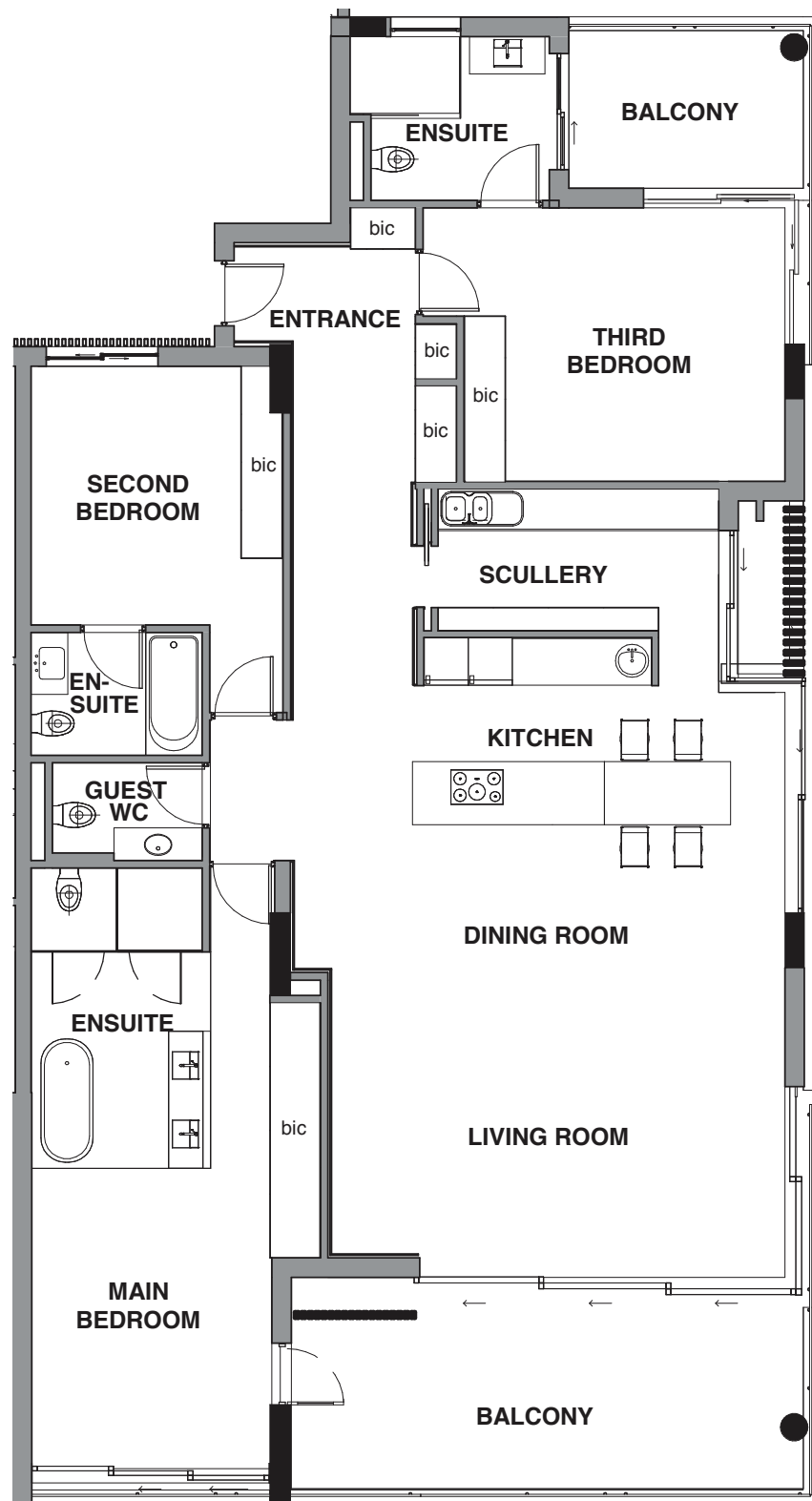
ADDRESS: 55 St Johns Rd,
Sea Point.

ERF NO: 1806

SOLD



THE ESTATE
ON ST JOHNS



UNIT 403 PLAN



4th STOREY
1 : 200



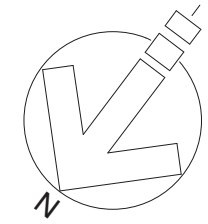
NORTH-WEST ELEVATION

403	224m ²
INTERNAL AREA:	190m ²
EXTERNAL AREAS:	34m ²
BEDROOMS:	3
BATHROOMS:	4
PARKING BAYS:	2
UNIT STYLE:	CLASSIC
ADDRESS:	55 St Johns Rd, Sea Point.
ERF NO:	1806

SOLD



THE ESTATE
ON ST JOHNS



PARKING AND STOREROOM (BASEMENT-1)

- Sold
- Allocated Parking Bay
- Reserved Optional Purchase Extra

403

224m²

INTERNAL AREA: 190m²

EXTERNAL AREAS: 34m²

BEDROOMS: 3

BATHROOMS: 4

PARKING BAYS: 2

UNIT STYLE: CLASSIC

ADDRESS: 55 St Johns Rd,
Sea Point.

ERF NO: 1806

SOLD



THE ESTATE
ON ST JOHNS